



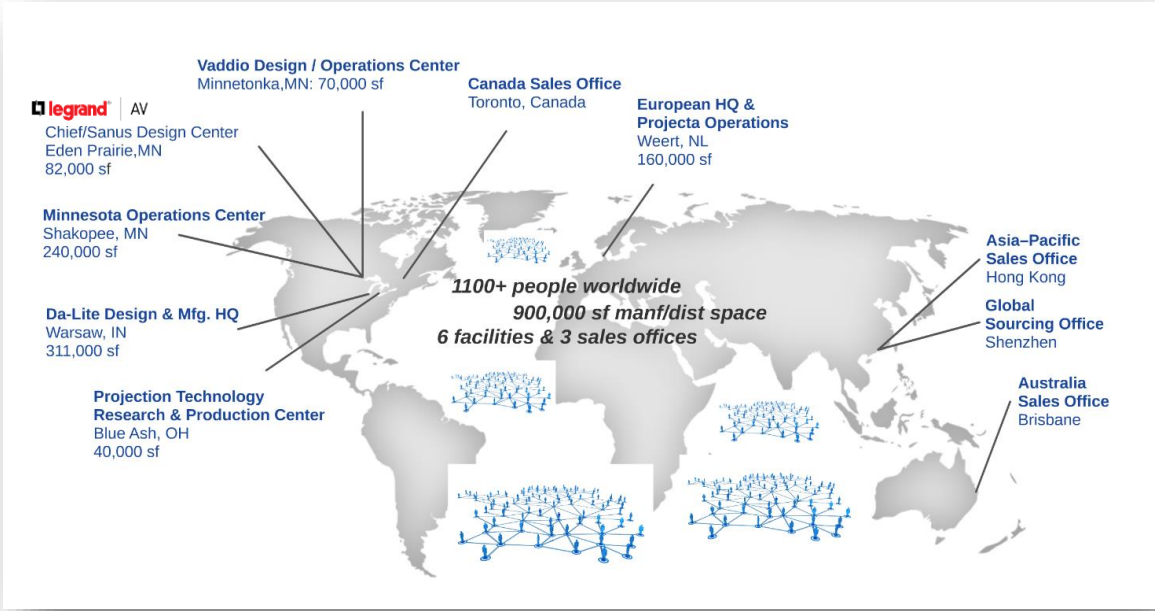
littlebit
TECHNOLOGY

CHIEF | MAP | LUXUL | C2G | VADDIO

LEGRAND AV 2024


 legrand

Legrand AV | Worldwide




EMEA Brand Overview

CHIEF



AV MOUNTING SOLUTIONS



MIDDLE ATLANTIC



19" RACK | STORAGE | FURNITURE

LUXUL



SWITCHES | WIRELESS | ROUTERS

C2G



CABLES | ADAPTERS | CONNECTIVITY

VADDIO



PTZ CAMERA | AUDIO & VIDEO SOLUTIONS

DA-LITE



PROJECTION SCREEN SOLUTIONS

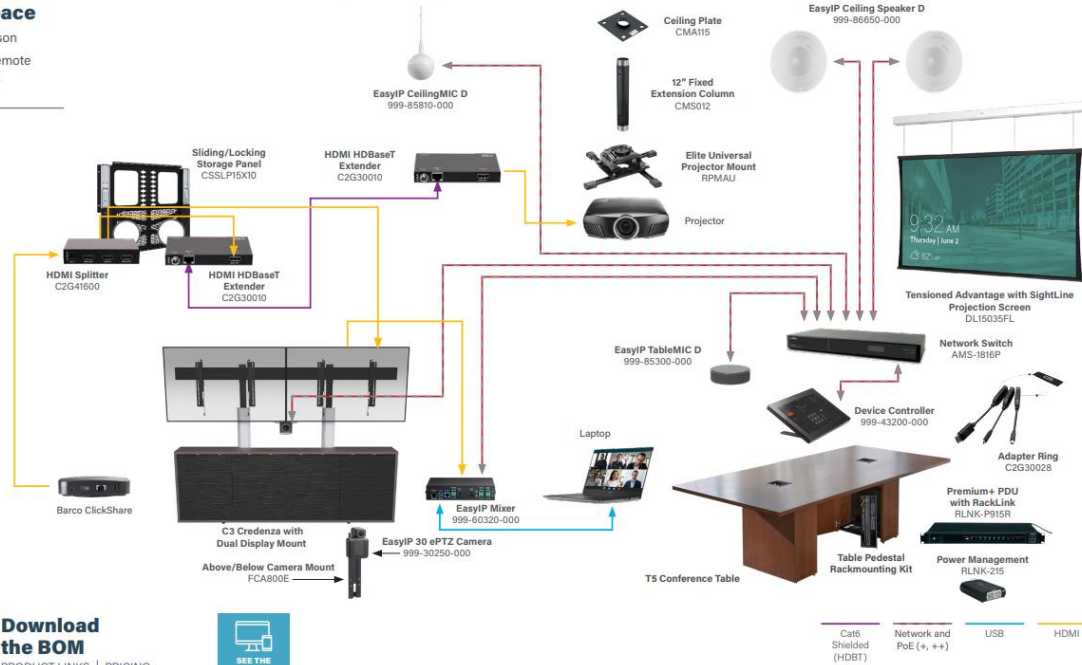
Boardroom

Use of Space

- 10-12 in person
- Unlimited remote participants

Why We Love It

- Easily add additional microphones, speakers and cameras
- Complete, simple, intuitive user interface allows users one-touch control, both locally and remote
- Premium PDU with RackLink offers remote system management for power monitoring, logging, and data reporting
- Provides robust audio mixing capabilities
- Supports up to four cameras



Download the BOM

PRODUCT LINKS | PRICING AND KICK-IT-UP A NOTCH PRODUCTS



Ultrawide Display Mounts | 21:9 | Front Row | + MTR Camera

CHIEF™
A brand of **legrand**

VADDIO
A brand of **legrand**



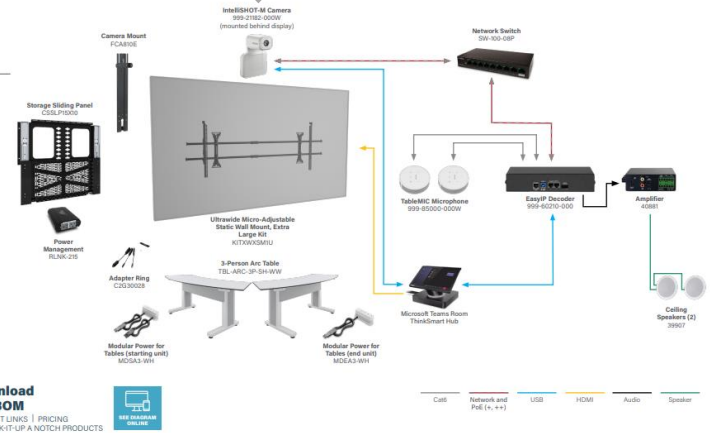
Ultrawide 21:9 Display Conferencing Space

Use of Space

- 3-6 in person
- Unlimited remote participants

Why We Love It

- The IntelliSHOT-M camera is Microsoft Teams Certified, ensuring you'll be seen
- Hardware echo cancellation and VAD audio microphones helps you be heard
- The ultrawide 21:9 keyboard tray is perfect for the new Front Row feature in Microsoft® Teams
- Convenient Chief® storage panel keeps your gear out of view but keeps it accessible
- Middle Atlantic® Power Distribution Units provide the meeting equity we all want, keeping everyone visible to the camera



 Certified for
Microsoft Teams

IntelliSHOT-M

Auto-framing

USB 3.0

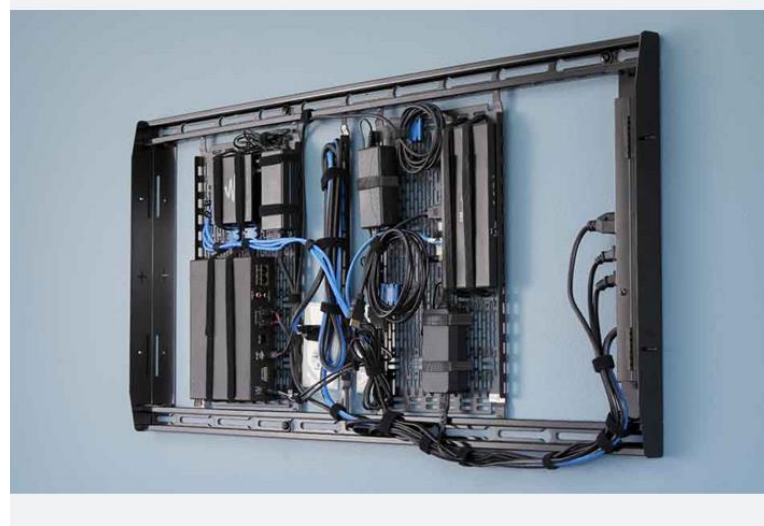
Zertifiziert für Microsoft Teams,
entwickelt für die Verwendung mit Ihren Microsoft Teams
Rooms (MTR) Installationen



Tempo™ Flat Panel Wall Mount System

Typical Screen Size : 49" – 86"
Weight Capacity : 200 lbs (90.7 kg)
Minimum Depth : 1.96" (50 mm)

VESA Mounting Pattern: up to 970 x 450 mm



Tempo™



VOYAGER MOBILE CART

Typical Screen Size : 50" – 75"
Weight Capacity : 79 kg

Black or White

VESA Mounting Pattern: 200 x 200 up to 600 x 400 mm



Chief XPD1U electric motorized mobile Cart



Chief XPD1U motorized mobile

Die mobile, elektrisch höhenverstellbare Displayhalterung XPD1U von CHIEF ist perfekt geeignet für interaktive Displays im Klassenzimmer oder Konferenzraum. Dabei glänzt die XPD1U mit einer Höhenverstellbarkeit von 660mm und einem automatischen Stopmechanismus sobald ein Gegenstand unter das Display gerät. Die elektrisch höhenverstellbare Halterung von CHIEF ist für Displays zwischen 55 und 110 Zoll und mit einem Gewicht von bis zu 140,6 kg geeignet und überzeugt zudem mit integriertem Stauraum (406 x 203 mm), ControlZone zur spielend leichten, nachträglichen Feinjustierung sowie einem integrierten Kabelmanagement.

Highlights

- Mobile, motorisierte, höhenverstellbare Displayhalterung
- Displays zwischen 55" - 100" mit einem Gewicht bis zu 140,6kg
- VESA® 200 x 200 – 860 x 510 mm
- Anti-Kollisions-Sensor: automatisches Stoppen sobald ein Gegenstand unter das Display gerät
- Integrierter Stauraum (406 x 203 mm)
- ControlZone zur nachträglichen Feinjustierung von Höhe und Nivellierung
- Integriertes Kabelmanagement
- Memory-Funktion: Bis zu drei Höheneinstellungen können gespeichert und wieder abgerufen werden
- Optionales Zubehör separat erhältlich: Fernbedienungs-Kit PACREM (enthält Fernbedienung und Bluetooth™ -Dongle) oder Bluetooth Dongle PACBLU
- Farbe: Schwarz

FIT Interactive Display Cart

The Fit Mobile Cart for Interactive Displays is designed for flexibility. The Fit Mobile Cart for Interactive Displays is designed for use where users want flexibility to move displays for optimal viewing and collaborative learning. Height-adjustable shelf is included to store accessories like keyboards, laptops, and styluses.

- Typical Screen Sizes: 55" to 86"
- Display Mounting Pattern: Up to 800 x 600 mm
- Display Weight Capacity: 79 kg
- Shelf Weight Capacity: 4.5 kg
- Robust casters
- Compact legs enhance safety and maneuverability.
- Built for efficiency, speed and easy movement



RFCUB



Available Now!

Fusion Display Mount Accessory for Logitech Rally Bar and Rally Bar Mini

The FCALRB1 is a Fusion® mount accessory for the Logitech® Rally Bar or Rally Bar Mini all-in-one video bar. The FCALRB1 can be mounted above or below typical 55" to 94" displays to best suit meeting and/or application needs.

The FCALRB1 is compatible with various display mounts, such as:

- Fusion Series Wall ([Fixed](#) and [Tilt](#)) and [Ceiling Mounts](#)
- Fusion Series [Carts](#) and [Stands](#)
- Tempo™ Series [Floor-to-Wall Support](#)
- Forum® Collaboration Suite [Free-Standing](#) and [Floor-to-Wall](#)

FCALRB1 – Fusion Camera Mount for Logitech Rally Bar, Mini and Huddle



logitech



*Shown with Logitech Rally Bar, not included



*Shown with Logitech Rally Bar Mini, not included



Coming Soon!



CHIEF Outlook | ISE 2024



Vaddio NEW products 2024



RoboSHOT 30E-M

AV Bridge Nano

Chief CMS compatible mount

EasyIP 5 Camera

EasyIP PCC Mini controller



Chief CMS compatible mount



RoboSHOT 30E-M



AV Bridge Nano



EasyIP PCC Mini controller



EasyIP 5 Camera

Vaddio | EasyIP Ecosystem Components | 2024



EasyIP 10



EasyIP 20



EasyIP 30 ePTZ



EasyIP 5



Audio products



AV network switches

Output devices



EasyIP Decoder



EasyIP Mixer



Control options

VADDIO Outlook | ISE 2024



EasyIP switch

Key features

1. EasyIP optimized AV network switch
2. PoE+ power
3. DHCP server enabled
4. Layer 2/3 full managed switch
5. Quiet operation



Certification

Barco ClickShare certification

Certified for ClickShare Conference

These devices are validated through our partnership program by both Barco and Vaddio every time we release a firmware version. This is the list of devices that we actively support through our partnerships and are the recommended devices to use in combination with ClickShare Conference.

- IntelliSHOT
- HuddleSHOT
- ConferenceSHOT AV
- ConferenceSHOT ePTZ
- ConferenceSHOT 10
- RoboSHOT 12E USB
- RoboSHOT 30E USB
- RoboSHOT 12E HDBT OneLINK Bridge System
- RoboSHOT 30E HDBT OneLINK Bridge System
- OneLINK Bridge
- TableMIC
- CeilingMIC
- EasyIP Mixer
- EasyUSB AudioBRIDGE

Compatible with ClickShare Conference

These devices have been tested by Vaddio and have been found to work with ClickShare Conference. Compatibility of the devices will be tested from time to time.

- EasyIP Decoder
- AV Bridge 2x1
- EasyUSB Mixer/Amp
- AV Bridge Mini
- AV Bridge MatrixMIX
- IntelliSHOT-M



MIDDLE
ATLANTIC.

A brand of Legrand

forum
COLLABORATION SUITE™

forum™

COLLABORATION SUITE

Ultra Wide Format 21:9 Display Solution

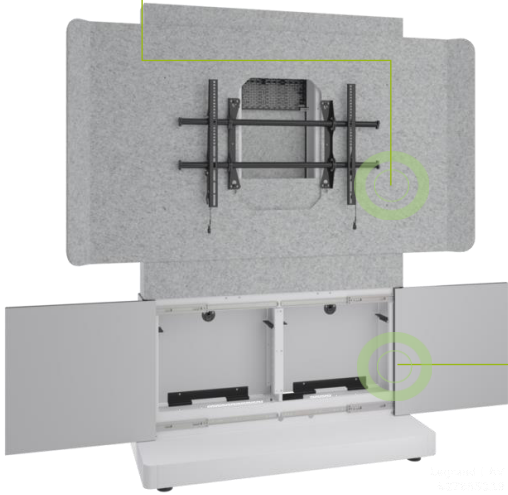
forumTM
COLLABORATION SUITE

Light Finish

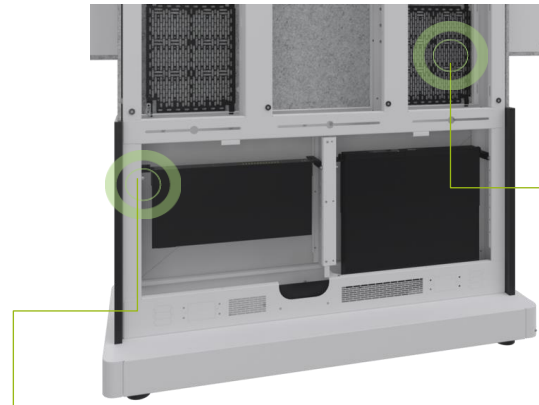
MIDDLE
ATLANTIC

Forum™ Collaboration Suite | Talking Points

Easily removable rear panels on Freestanding models



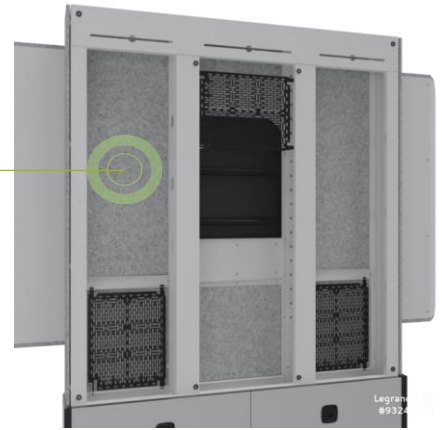
Dual 2U Rack bays included



Multiple Leverlock positions both upper & lower sections (includes one LL-VP2210)



Crestron Flex System bolts right in (167 cm / 66" model)



Soft-close sliding doors

I'm not hearing an echo!

The included *Shroud & Mount Kit* is outfitted with acoustic fabric to *keep the noise levels and audio reverberation to a minimum* to ensure the highest quality audio experience for both in-person and remote audiences in open spaces.

The acoustic felt material is made of *100% polyester containing up to 50% of recycled plastic bottles (PET)*.



The back is wrapped in *acoustic felt*. Therefore, when used as a room divider, the freestanding model also functions as a *sound dampener*.

 Available Now!

MIDDLE
ATLANTIC.
A member of Etihad

forum
COLLABORATION SUITE

Select Series PDU with RackLink™: IEC Models

Monitor your power anytime, anywhere, and even automatically. Select Series PDUs with RackLink™ creates a simple and cost-effective solution that puts intelligent control of power distribution at your fingertips, wherever you are.

- **20 Amps with 2, 4 or 9 Outlets (8 of which controlled)**
- 240V
- CE Rated with IEC outlets
- RackLink™ enables **remote sequencing** with user selectable delays for an optimal start-up or shut down progression.
- Automate it and forget about it. Improve your system reliability by **automating actions** such as multiple IP AutoPing and recovery.
- Seamlessly interfaces with 3rd party AV control systems and cloud platforms for scheduling, control, reporting and even customization.



RLNK-210-IEC-NS



RLNK-410R-IEC-NS



RLNK-210-IEC-NS

USB-C-Konnektivität



C2G HDMI Cables

C2G®

Neue Serien

- Die **C2G HDMI-Kabel** wurden in drei Serien umstrukturiert, um die Kabelauswahl zu erleichtern

Performance-Serie - Premium-Zuverlässigkeit

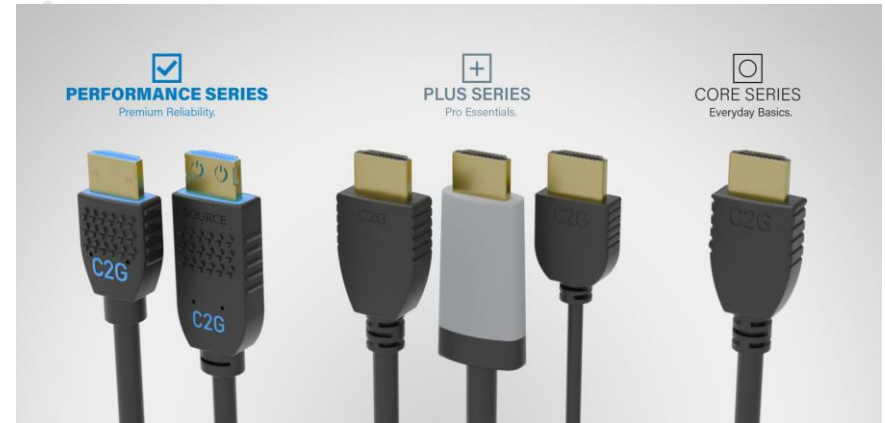
Ihre erste Wahl, wenn ein Ausfall nicht in Frage kommt

Plus-Serie - Profi-Essentials

Eine breite Auswahl an Kabeln für eine Vielzahl von Anwendungen, zum richtigen Preis

Core-Serie - Alltägliche Basics

Ihre erste Wahl für einfache 4K-HDMI-Kabel, zuverlässige Konnektivität zu einem günstigen Preis



Visit https://www.legrandav.com/resources/360_product_overviews/c2g-hdmi-series

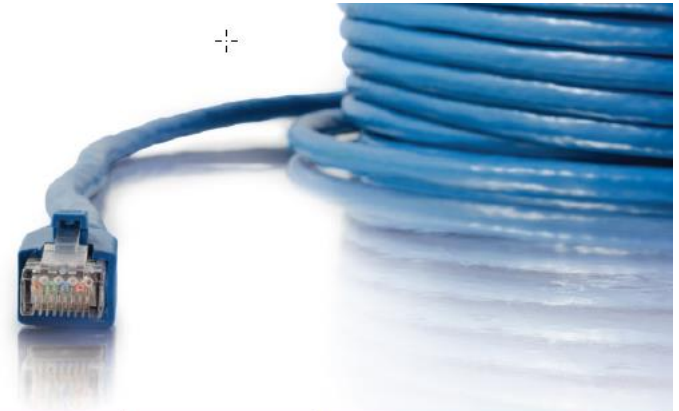


Shipping Now!

C2G Netzwerk Patchkabel

C2G Netzwerk-Patchkabel sind perfekt für Netzwerkadapter, Hubs, Switches, Router, HDBaseT-Anwendungen und mehr geeignet.

In verschiedenen Farben erhältlich, damit Sie Ihre Netzwerkinstallation leicht farblich kodieren können.



	Netzwerk-Datengeschwindigkeit				Bandbreite	Distanz	Nahnebensprechdämpfung (NEXT)
	10 Mbit/s	100 Mbit/s	1 Gbit/s	10 Gbit/s			
Cat5e	✓	✓	✓	–	100 MHz	Bis zu 100 m	Gut
Cat6	✓	✓	✓	✓*	250 MHz	Bis zu 100 m*	Besser
Cat6a	✓	✓	✓	✓	500 MHz	Bis zu 100 m	Bestens

*Datengeschwindigkeiten von 10 Gbit/s sind auf 55 m begrenzt

C2G USB-C Dockingstationen



88846

USB-C 6-in-1 Mini-Dockingstation mit HDMI, Ethernet, USB und Power Delivery bis zu 60 W - 4K 30 Hz

Single-Display-Dockingstation



C2G54488

USB-C 9-in-1-Dual-Display-Dockingstation mit HDMI, Ethernet, USB, 3,5-mm-Audio und Power Delivery bis zu 60 W - 4K 30 Hz

Single-/Dual-Display-Dockingstation



C2G54537

Thunderbolt 4 USB-C 10-in-1-Dual-Display-Dockingstation mit Ethernet, USB, SD-Kartenleser, 3,5-mm-Audio und Leistungsabgabe bis zu 90 W - 4K 60 Hz

Single-/Dual-Display-Dockingstation



C2G80925

USB-C 12-in-1 Triple-Display-Dockingstation mit HDMI, DisplayPort, Ethernet, USB, 3,5-mm-Audio und Stromzufuhr bis zu 85 W - 4K 30 Hz

Triple-Display-Dockingstation



C2G54542

USB-C 10-in-1 Triple-Display-Dockingstation mit HDMI, DisplayPort, VGA, Ethernet, USB, SD-Kartenleser, 3,5-mm-Audio und Stromversorgung bis zu 100 W - 4K 30 Hz

Triple-Display-Dockingstation

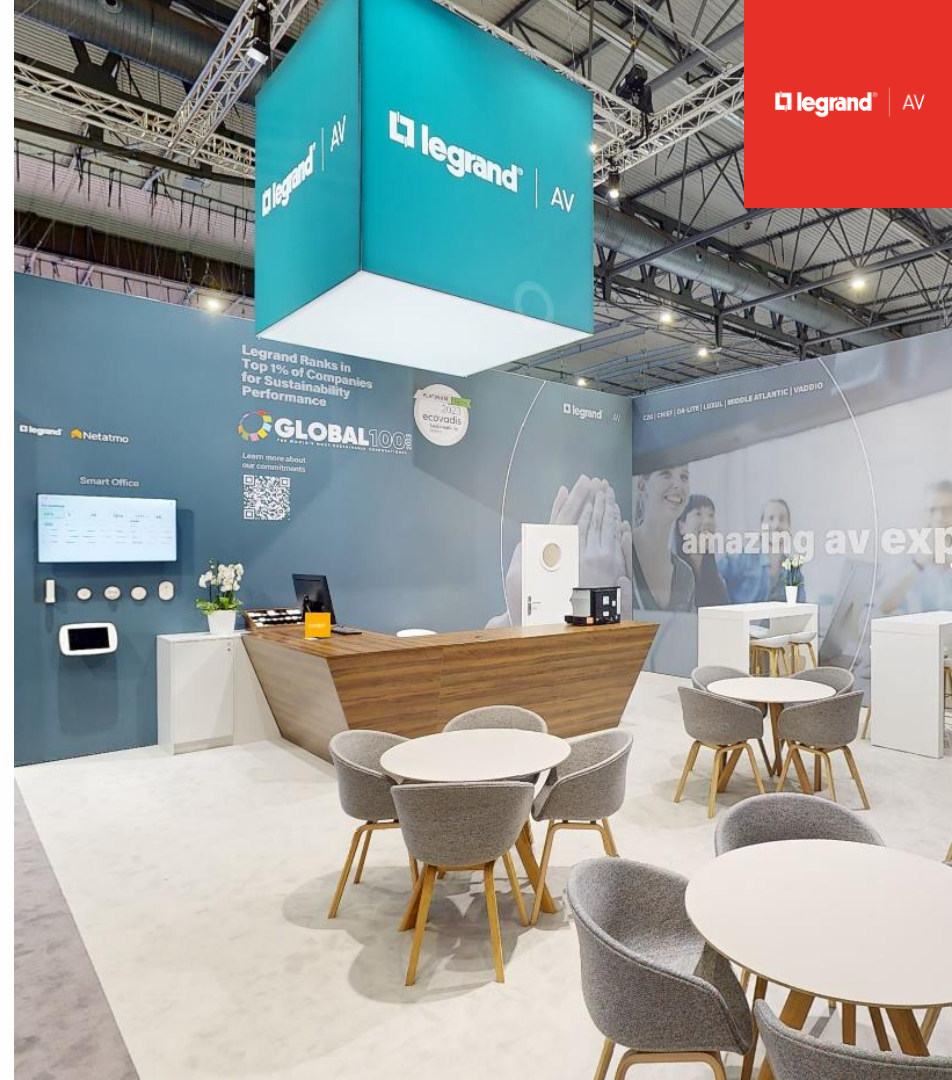




ISE 2024 Virtual Tour

- If you were not able to go to Barcelona and visit ISE 2024, we got you covered. You can now walk across our booth and check out all products like you were actually there. Click your way through the booth and click on the products for more information.
- Even if you were at the show, you might not have had the time to see everything we had on display, and this is a great option to take the time and see it all.

Find out
more!



Thanks for your time.



Guido Kratzenberg
Senior Business Development Manager DACH
Germany | 2024