

LITTLEBIT EXPERIENCE DAY 06. June 2024

LOGITECH SPRING UPDATE

logitech®

Homero Gessler

Senior Key Account Manager B2B



Roman Gischig

Solutions Engineer





PRICING

SECURITY

SUSTAINABILITY

MARKET LEADER

PRODUCTS

INNOVATION

LIFE CYCLE

CONTINUOUS IMPROVEMENTS

SUPPORT

Global presence and reach

40+

years in business

10+

years of experience with enterprise customers

100+

countries of distribution

14

customer service centres

Market position

70%

of Fortune 100 companies are using logitech products

1 of 3

conference rooms is equipped with logitech

#1

Market share in Video Conferencing

Partner

 Microsoft

 ZOOM

 Google Meet

 APPSPACE

 Robin

 Steelcase

 avocor

 Heckler

 SAMSUNG

LITTLEBIT EXPERIENCE DAY 06. June 2024

WHAT SET US APART

logitech®



SUSTAINABILITY



\$134.9 Mrd.

Estimated value of the green technology & sustainability market by 2030, from \$28.6bn in 2024

Source: <https://www.prnewswire.com/news-releases/greentechnology--sustainability-market-worth-134-9-billion-by-2030---exclusive-report-by-marketsandmarkets-302059420.html>

Sustainability: more than just a hygiene factor

What is driving the market
for more sustainable
technology solutions?

- Increasing government rules/regulations
- Growth in corporate sustainability initiatives
- Increasing consumer awareness and demand

Where are you on your sustainability journey?

It is undisputed that IT contributes to a company's environmental impact - and is therefore also an important partner in reducing this impact.

Are the companies you buy from committed to sustainable business practices?

98%

CEOs who say that it is their job to make their company more sustainable.

source: <https://www.accenture.com/us-en/insights/sustainability/ungc>

64%

of IT experts are certain that taking a leading role in the implementation of ESG and sustainability practices is an important or very important business goal for the coming year in order to differentiate themselves and make a difference.

source: <https://www.accenture.com/us-en/insights/sustainability/ungc>



How can you achieve your goals?



Scope 3 Emissionen

For many organisations, the biggest contribution to environmental impact comes not from their internal setup and processes, but from the supply chain and external factors. So it's worth taking a closer look!

OWNED



Scope 1

DIRECT

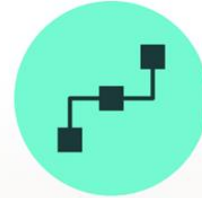
ENERGY



Scope 2

INDIRECT

SUPPLY CHAIN



Scope 3

INDIRECT

Logitech's Design for Sustainability

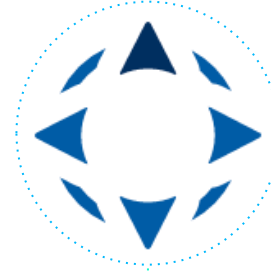
rethink our products for a positive future.

Our Engagement

We have aligned our existing sustainability programmes with the United Nations Sustainable Development Goals (SDGs).

We support the Paris Agreement and are committed to limiting our greenhouse gas emissions so that they are in line with the ambitious 1.5°C scenario.

Awards such as our EcoVadis platinum rating confirm our commitment and make us proud to be among the top 1% of sustainable companies.



We support the ten principles of the United Nations Global Compact (UNGC) on human rights, labour, the environment and anti-corruption.

As a core element of our sustainability management, we joined the RBA in 2007 to collaborate with industry peers.

Design for Sustainability

Our aim is to optimise product performance while reducing CO2 emissions through recycling, among other things.

CONFERENCE ROOMS



SHARED WORKSPACES



PERSONAL WORKSPACE



Clean production

Materials

Energy consumption

Extended product life cycle

Recycling

Less impact on production

- Environmentally friendly production with renewable energy
- Tested and certified by independent institutes



Responsible conscious handling of materials

- Next-life plastic (**certified recycled plastic**)
- Aluminium with low carbon content
- Recycled fabrics
- Packaging from FSC-certified and other responsible sources



Clean production

Materials

Energy consumption

Extended product life cycle

Recycling

Carbon labelling

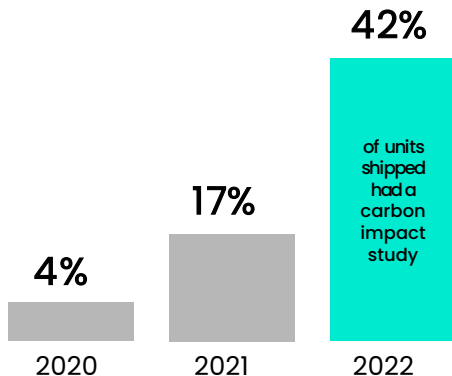
Labels for your CO2 footprint **help you to calculate the impact of your purchases**

[CO2 balance by product](#)



Transparency: Carbon Clarity Labels that are certified by third parties

We are committed to CO₂ transparency and are responsible for reducing our impact.



100% certified climate neutral
Across the entire portfolio and the
entire value chain.



Clean production

Materials

Energy consumption

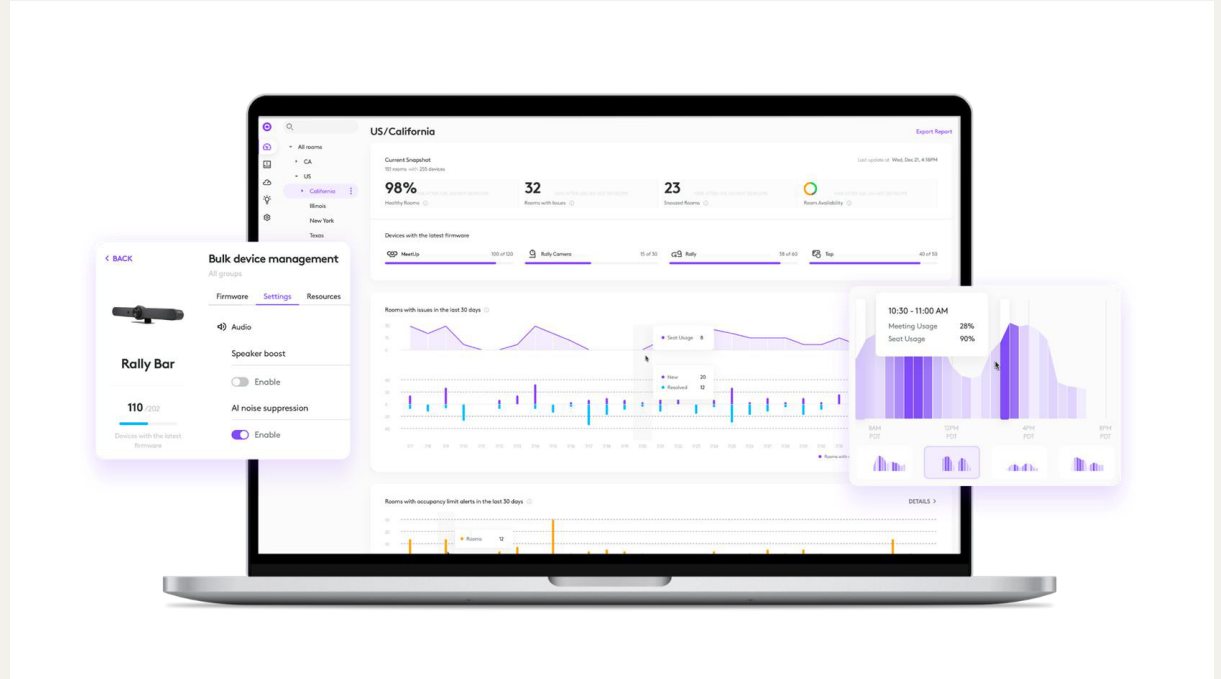
Extended product life cycle

Recycling

Reduced energy consumption

All-in-one-systems work with less energy than usual room solutions

Operating settings that support the shutdown of devices that are in standby mode



Circularity: Extend service life, reduce waste

- Software-Updates improve performance and offer new functions
- Possibility of **replacing certain parts** if necessary as opposed to shipping an entire device or system



Clean production

Materials

Energy consumption

Extended product life cycle

Recycling

Recycling with Select

Our „Collect & Recycle“-
programme ***is part of the Select
service plan and helps
customers to recycle old video
equipment regardless of brand**



LOGITECH SELECT
SERVICE-PLAN

Ensure business continuity with Select, a comprehensive service
plan for all your meeting rooms.

*Logitech is currently introducing this programme to generate early customer interest and optimise the service before it is fully rolled out in Select later in 2024. Participation in the programme cannot be guaranteed. Interested parties should contact their account manager for more information and eligibility requirements.

Wie sich das rechnet: CollabOS-Geräte

Clean production

+ renewable energy

Energy consumption

+ All-in-one-Design
+ CollabOS Software

Materials

+ Next-Life-Plastics
+ Aluminium with low carbon content
+ Recycled materials
+ Packaging with FSC-certification

Extended product lifecycle

+ New functions per Software-Update
+ Spare parts

Recycling

+ collect and recycle with Select



Top: PCR proportions by product

*Plastic parts: Certified percentage of post-consumer recycled plastic (PCR).
% PCR varies depending on colour.
PCR (measured in per cent) (%) in plastic parts only*

LIFE CYCLE

LIFE CYCLE

QUALITY

How long will my product last until it fails?

CONTINUOUS DEVELOPMENT

How long will my product get developed with new features, accessories?
How long will it be competitive?

END OF SALES

When will my product will be replaced? How long will it remain on the market?

END OF SUPPORT

Support ≠ continuous improvements!
How long will my product get support and part replacement?

QUALITY

END OF SALES

END OF SUPPORT

DEVELOPMENT



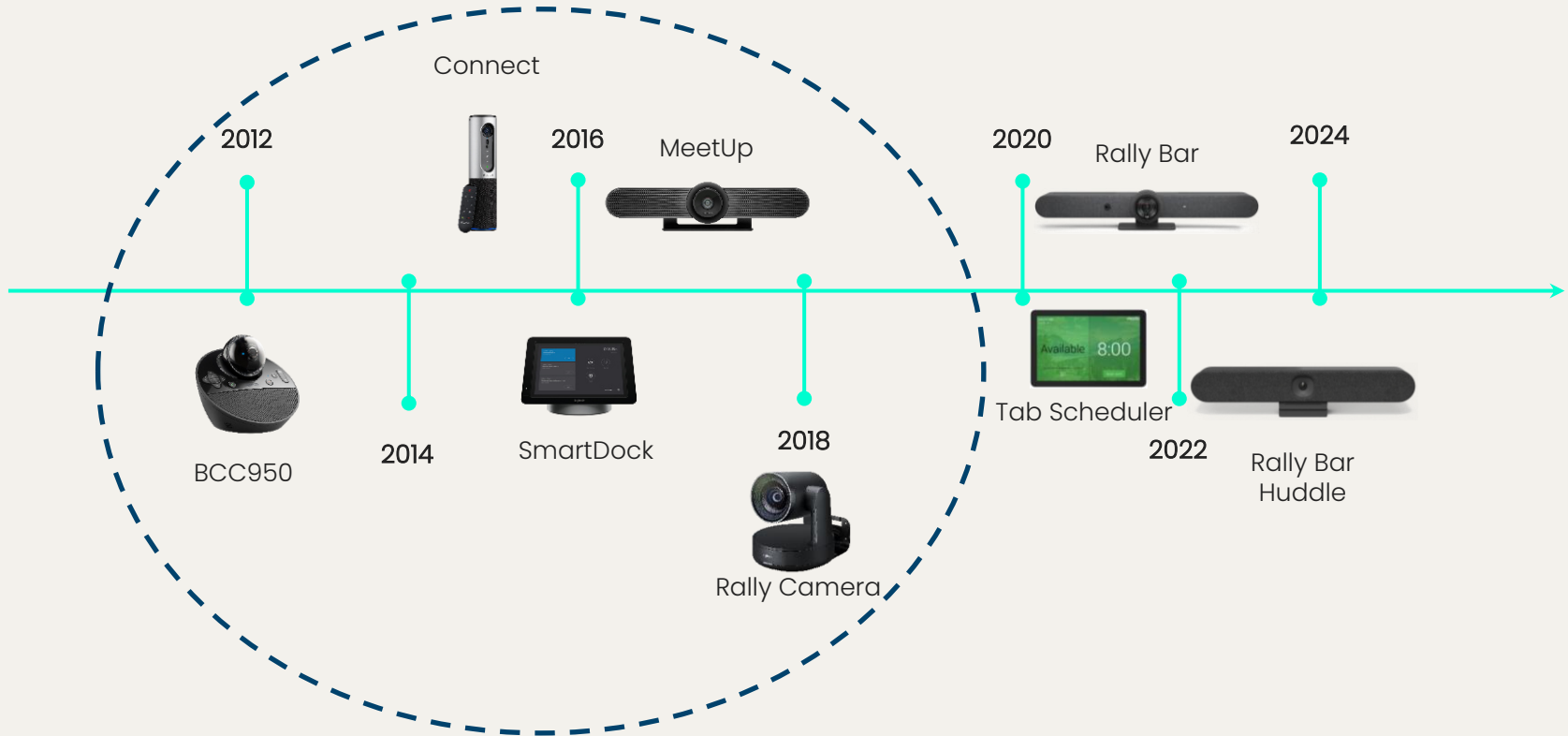
1M+ Sold

QUALITY

END OF SALES

END OF SUPPORT

DEVELOPMENT

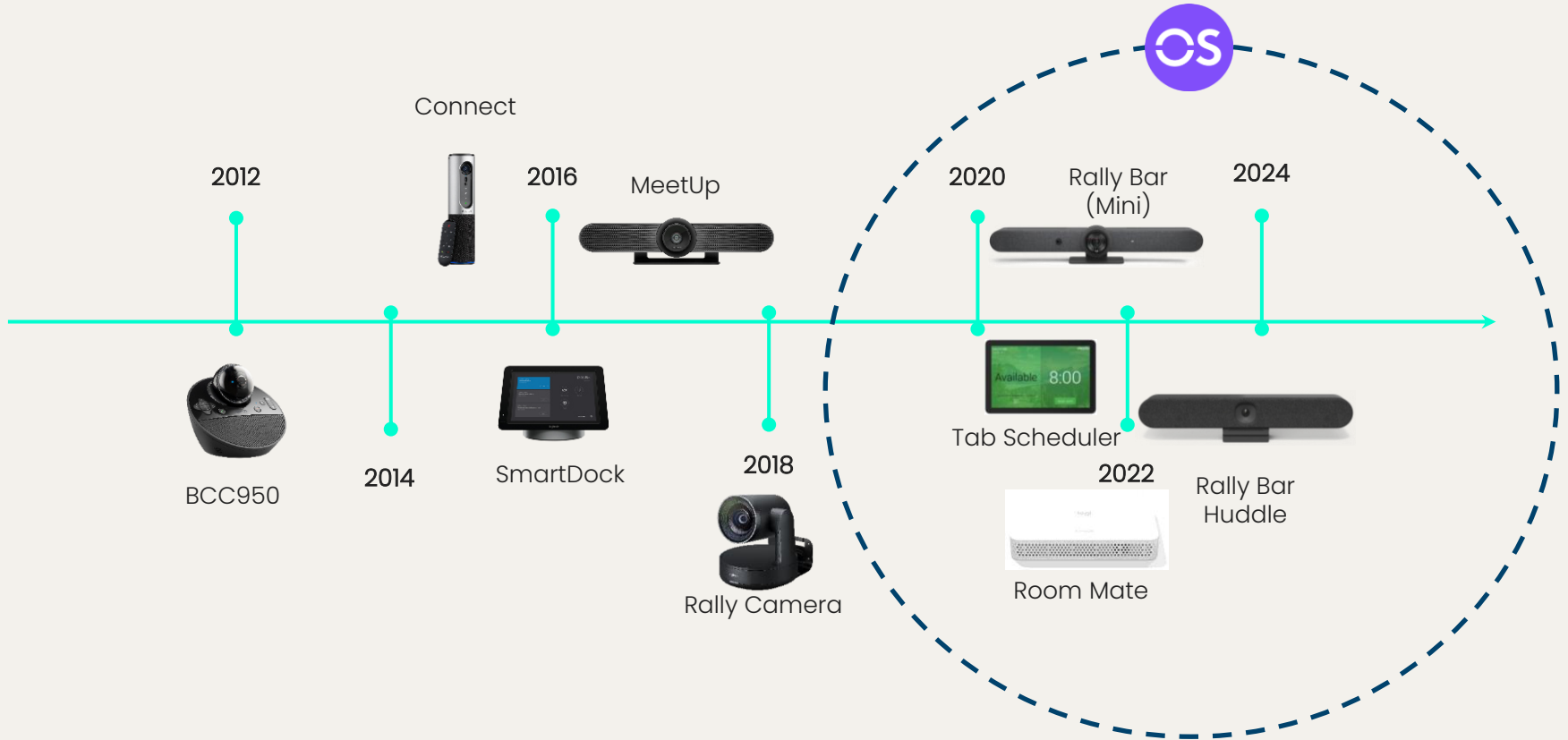


QUALITY

END OF SALES

END OF SUPPORT

DEVELOPMENT



QUALITY

END OF SALES

END OF SUPPORT

DEVELOPMENT

Android updates help improve security and supportability.

Rally Bar Huddle

11



Rally Bar Mini

10



Rally Bar

10



Tap Scheduler

10



Tap IP

10



Sight

10



RoomMate

10



Scribe



QUALITY

END OF SALES

END OF SUPPORT

DEVELOPMENT

All CollabOS devices will get updated from Android 10 to Android 12.

Android 12 is supported till October 4 2026 by Microsoft!

Rally Bar Huddle



Rally Bar Mini



Rally Bar



Tap Scheduler



Tap Scheduler



Scribe



Sight



RoomMate



Android 12

QUALITY

END OF SALES

END OF SUPPORT

DEVELOPMENT

LIFE CYCLE 3Y VS 5Y+

COST SAVINGS

For Customers: Lower spending on replacements.

For Resellers: Better inventory management and reduced costs.

Customer Trust

For Customers: Confidence in long-lasting products.

For Resellers: Improved brand loyalty and long-term sales.

Environmental Impact

For Customers: Less electronic waste.

For Resellers: Enhanced brand reputation through sustainability.

Tech Updates

For Customers: Products remain current with updates.

For Resellers: Easier support and increased product appeal.

Quality & Reliability

For Customers: Fewer breakdowns and repairs.

For Resellers: Increased customer satisfaction and repeat business.

Resource Efficiency

For Customers: Investing in sustainable, durable products.

For Resellers: Attracting eco-conscious customers and reducing returns.

MAX LIFE CYCLE = MIN TCO

QUALITY

END OF SALES

END OF SUPPORT

DEVELOPMENT

BUGFIXES

Resolves software errors, while security patches protect against threats. Regular updates ensure optimal functionality and safety.

ACCESSORIES & ECOSYSTEM

Integrates the product with other devices and services, creating a seamless, interconnected experience. Accessories play a key role, enhancing functionality and adding value to the overall system

NEW FEATURES

Adds capabilities and enhancements, improving user experience and functionality, and keeping the product competitive and current.

SERVICES

Provides device management, support, data insight and enables new features. Ensuring optimal performance, user satisfaction and investment protection.

DEVELOPMENT

NEW FEATURES



Sight Smart Switching

Intelligent switching for the best front-and-center experience.

For Rally Bar/Mini
All service providers



RightSound 2 - CollabOS 1.12

AI-powered sound that minimizes the impact of unwanted noise like reverb and echo.

In-room participants will be heard with even greater clarity at greater distances.



Multi-Stream (on Windows)



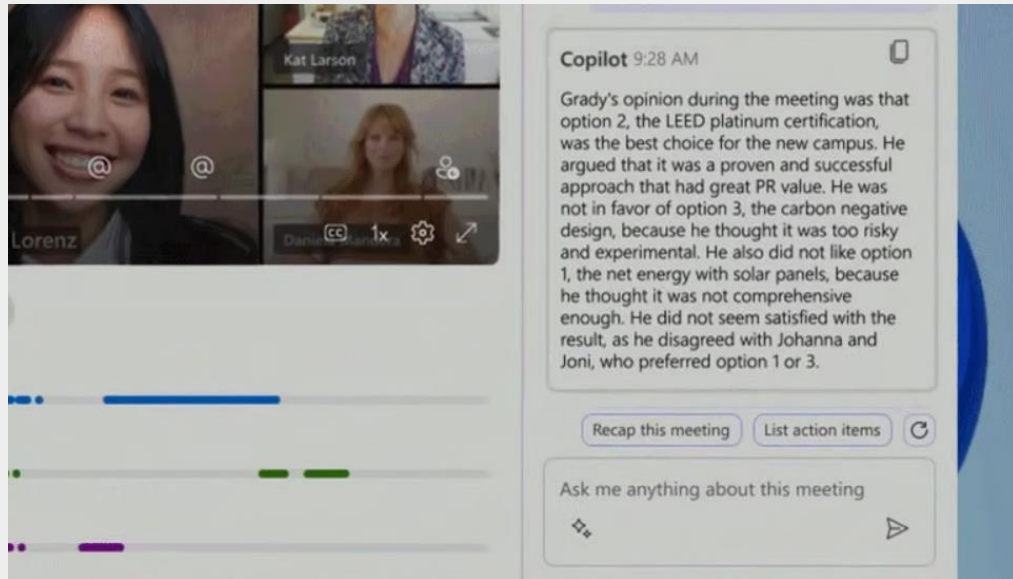
Microsoft AI - Copilot

Don't miss out on the action!

Conf cams will work with Copilot to identify and label participants in the room, and attribute meeting dialogue to the correct speakers, and support better meeting summaries in Microsoft Teams Rooms.

Copilot - **available now** on MTRoW and Teams-certified devices

► More on Copilot [on Product Hub](#)



SPEAKER RECOGNITION AND ATTRIBUTION TO UNLEASH THE POWER OF COPILOT

Copilot in Teams Rooms

Intelligent Speaker for All Rooms and Devices

- Feature now available on Teams Rooms on Windows as public preview
- Available with all Logitech devices certified for Teams Rooms on Windows
- Logitech's flagship devices have industry leading microphones and AI software enabling the Microsoft Cloud to seamlessly recognize speakers
- Learn more about speaker recognition and attribution [here](#)



INDUSTRY FIRST

Entire portfolio supports Windows and Android



Teams Rooms on
Windows



Teams Rooms on
Android

Only Logitech supports Windows and Android on
the same device, across the flagship portfolio.



LOGITECH OFFERS CHOICE AND FLEXIBILITY

Copilot in Teams Rooms

Teams Rooms on
Windows



Teams Rooms on
Android



Decision Driver

Copilot is a must-have feature

Available now

Consider switching to Windows

Copilot is a nice-to-have feature

Available now

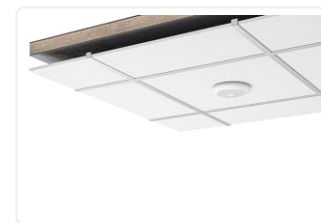
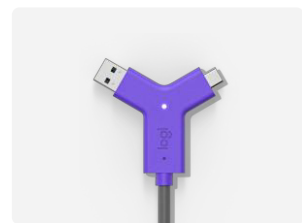
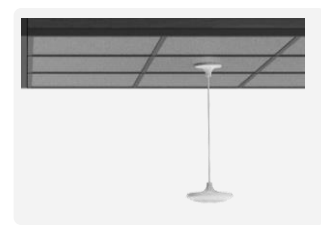
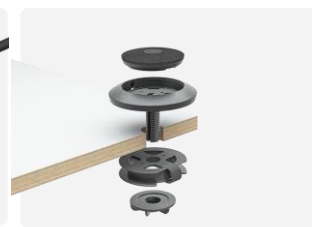
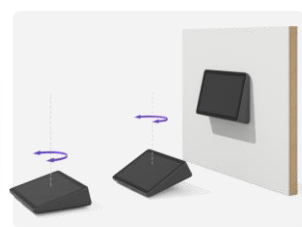
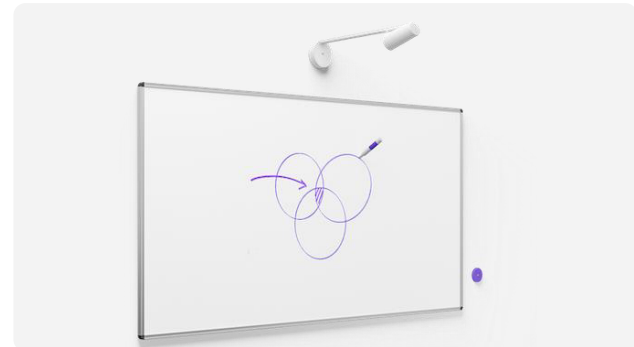
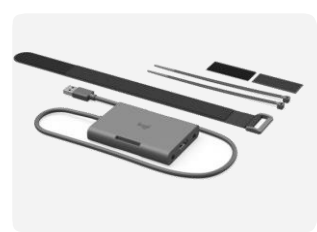
Coming to Android later this year

Switching from Android to Windows only requires the addition of a certified PC from Logitech

DEVELOPMENT

ECOSYSTEM





DEVELOPMENT

Services



New Service Offerings for Rooms



Basic

Included w/purchase

Basic device management
Update and configure
Business support
2-year warranty



Essential

\$199/room/yr

Everything in Basic, plus:

Alerts & ServiceNow
Insights
Sync Remote UI Access
Room booking



Select

\$399/room/yr

Everything in Essential, plus:

24/7 assistance
Product replacements
Advanced RMA

New Service Offerings for Desks



Basic

Included w/purchase

Basic device management
Update and configure
Business support
2-year warranty
Desk booking



Essential

\$49/desk/yr

Everything in Basic, plus:

Alerts & ServiceNow
Insights
Sync Remote UI Access



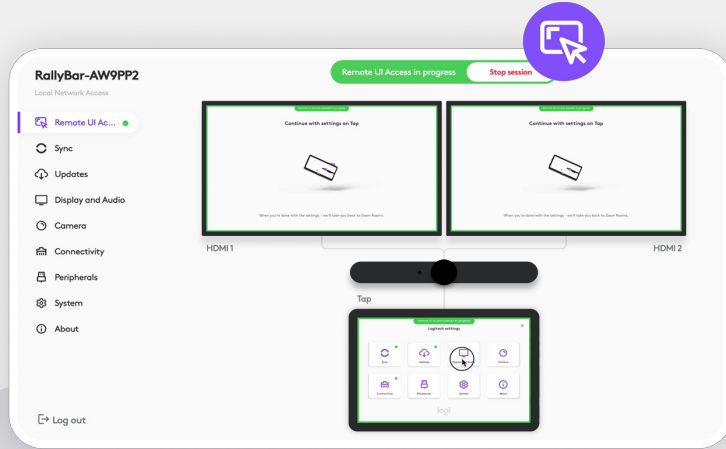
Select

\$199/desk/yr

Everything in Essential, plus:

24/7 assistance
Product replacements
Advanced RMA

2 New Capabilities



Sync Remote UI Access

Interact with CollabOS devices remotely, as if you were right in front of them.



Space Management

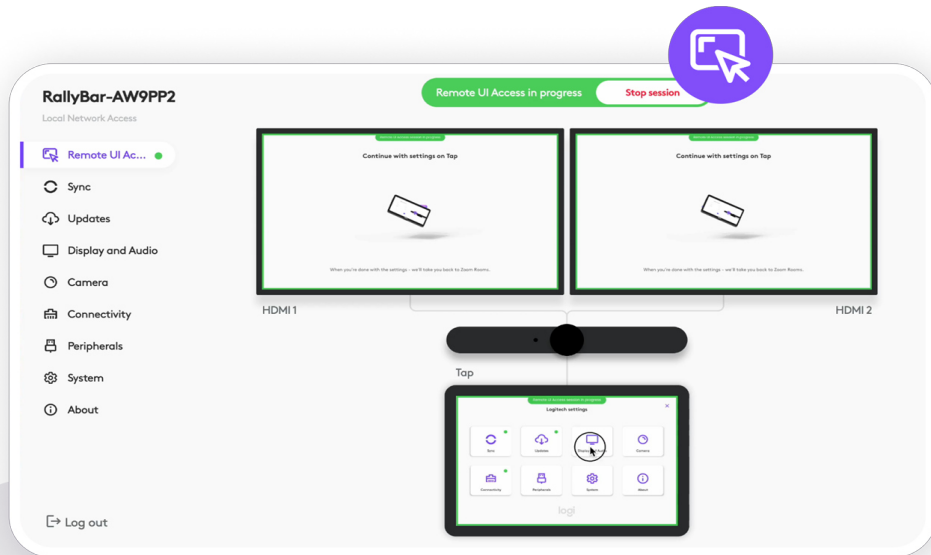
Bring spaces, devices and people together in one ecosystem.

DEMO

Intro to Sync Remote UI Access

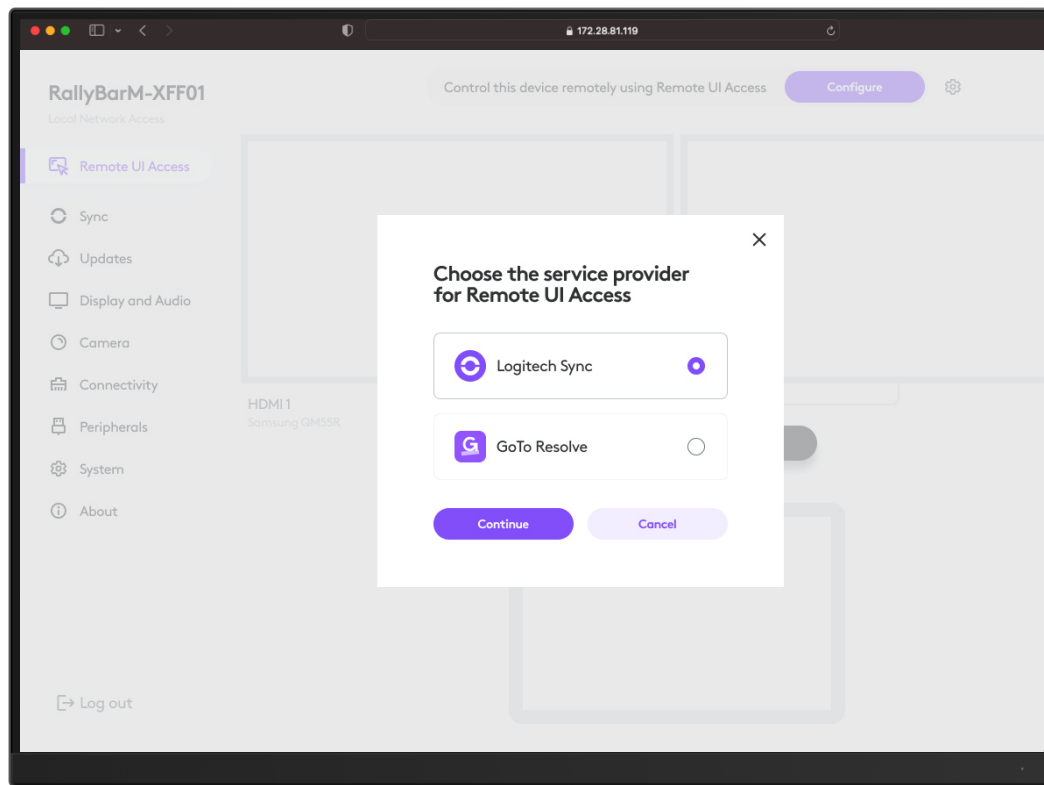
Simplified remote management

Remote UI Access allows you to interact with network-connected CollabOS devices, just as you were right in front of them.



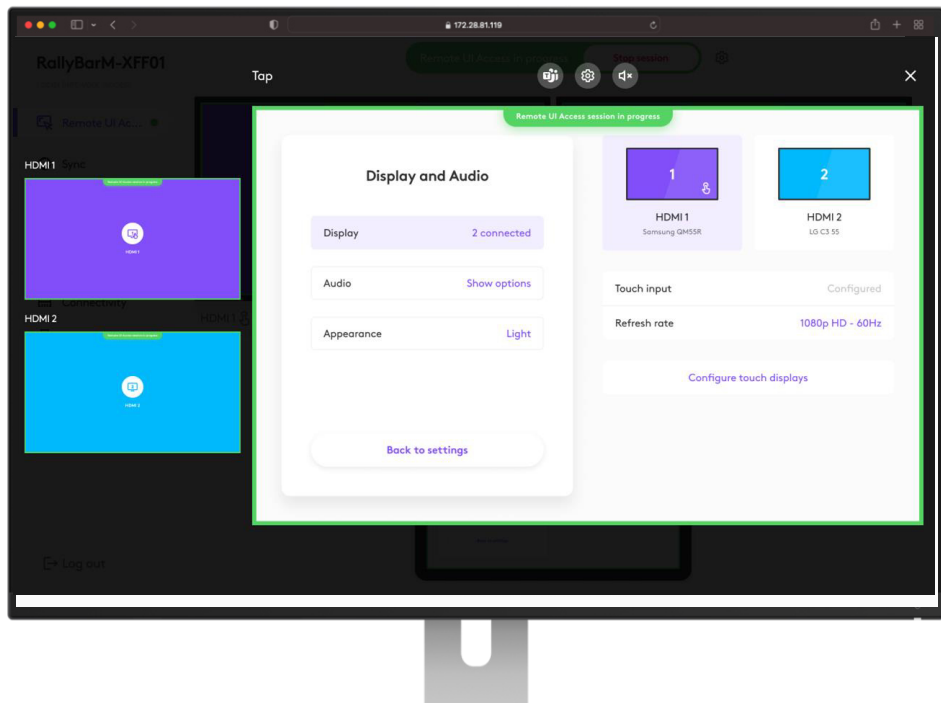
Remote UI Access

Choose your provider!



Get an enhanced view of small screens

The clean and clear interface makes it easier to interact with smaller screens and settings, giving you complete visibility and control of the devices.



Summary: Remote UI Access

Availability:

CollabOS 1.12 (April)

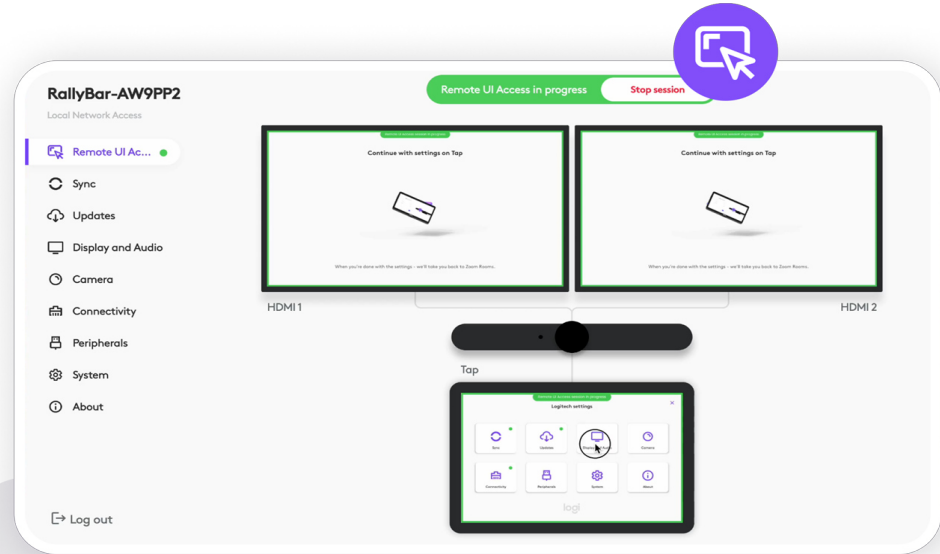
Spring Event (May 21st)

How to purchase:

Included in Essential (August) or Select

How to trial:

Available at a 30 per device trial



Intro to room booking

Booking

Office maps

Simple management

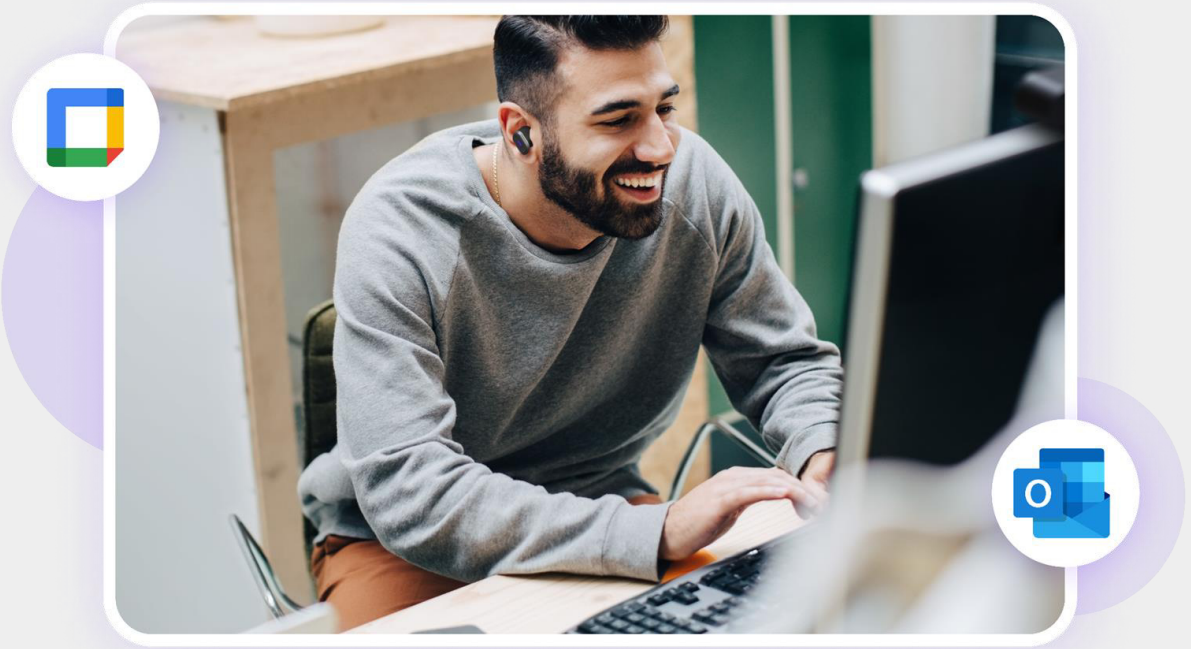
Insights

Easily book rooms

Through calendar

On Tap Scheduler

Auto-book & Release (with
Rally Bars)



Booking

Office maps

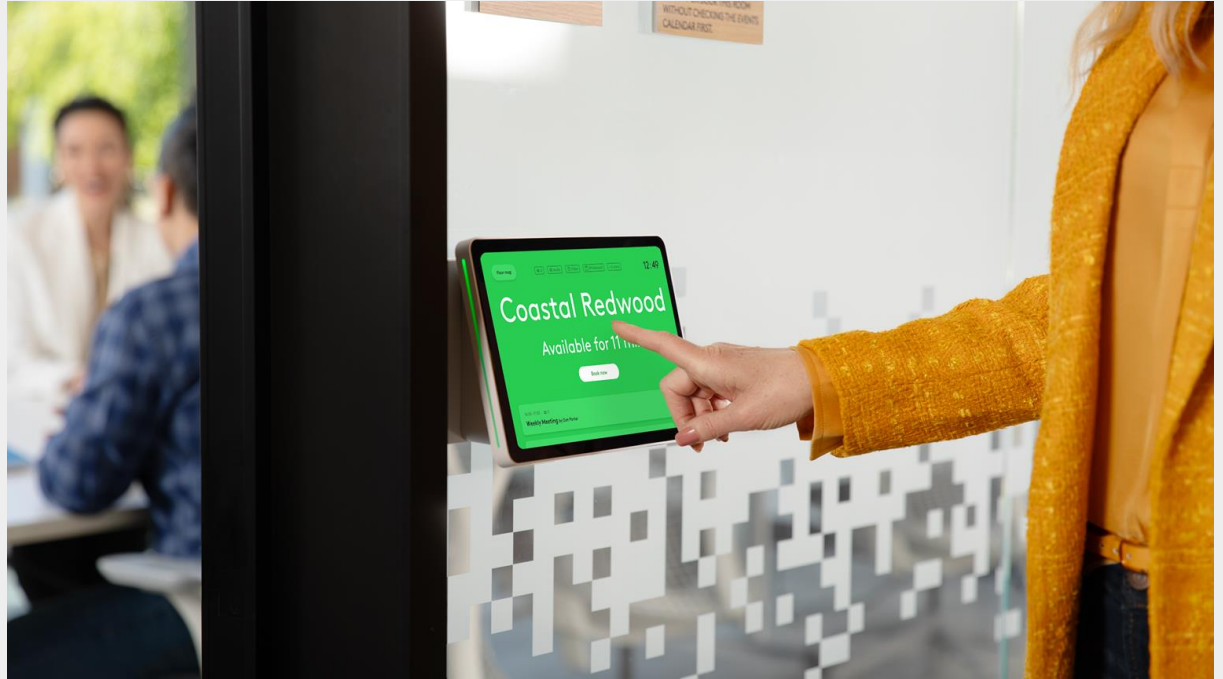
Simple management

Insights

Easily book rooms

Through calendar
On Tap Scheduler

Auto-book & Release (with Rally Bars)



Booking

Office maps

Simple management

Insights

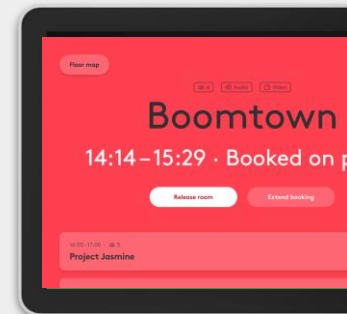
Easily book rooms

Available

Booked

Occupied

Through calendar
On Tap Scheduler
Auto-book & Release (with Rally Bars)



Booking

Office maps

Simple management

Insights

Easily book rooms

Through calendar
On Tap Scheduler
**Auto-book & Release with
Rally Bars***



*Coming soon

Booking

Navigation

Simple management

Insights

Navigate the office with ease

With Tap Scheduler

With Logi Tune

With RoomMate



Booking

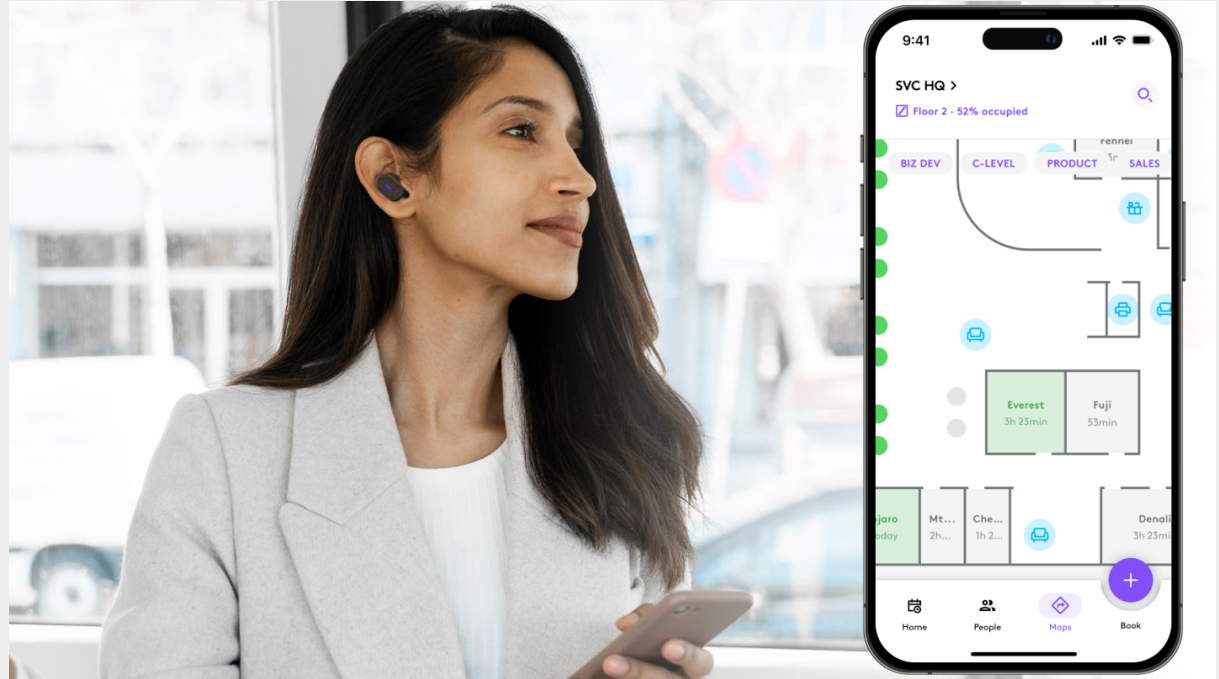
Navigation

Simple management

Insights

Navigate the office with ease

With Tap Scheduler
With Logi Tune
With RoomMate



Booking

Navigation

Simple management

Insights

Navigate the office with ease

With Tap Scheduler
With Logi Tune
On larger sized displays
through RoomMate



*Available post-launch

Booking

Office maps

Simple management

Insights

Manage through Sync

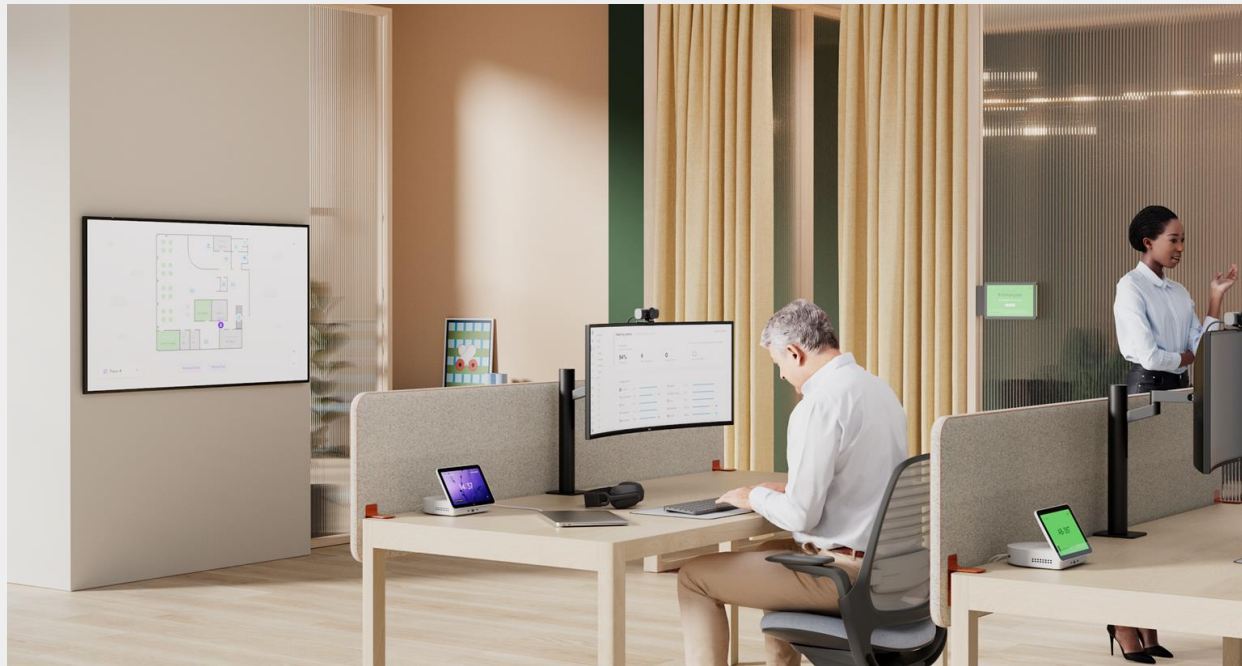
Setup with ease

Sync Remote UI Access

Booking policies

Manage maps

Customize Tap Scheduler



Booking

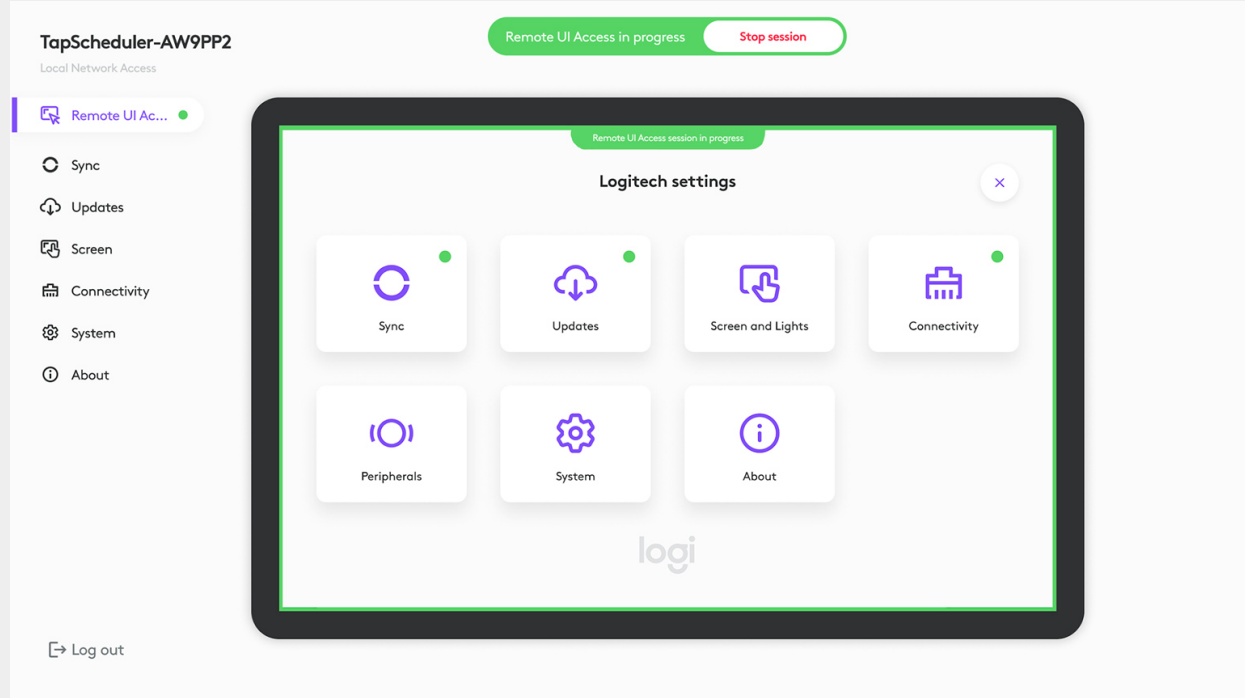
Office maps

Simple management

Insights

Manage through Sync

Set up with ease
Sync Remote UI Access
Booking policies
Manage maps
Customize Tap Scheduler



Booking

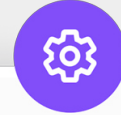
Office maps

Simple management

Insights

Manage through Sync

- Setup with ease
- Sync Remote UI Access
- Booking policies**
- Manage maps
- Customize Tap Scheduler



Device settings Update channels **Room Policy** IT settings PINs Cleaning PINs

ALL SITES 203

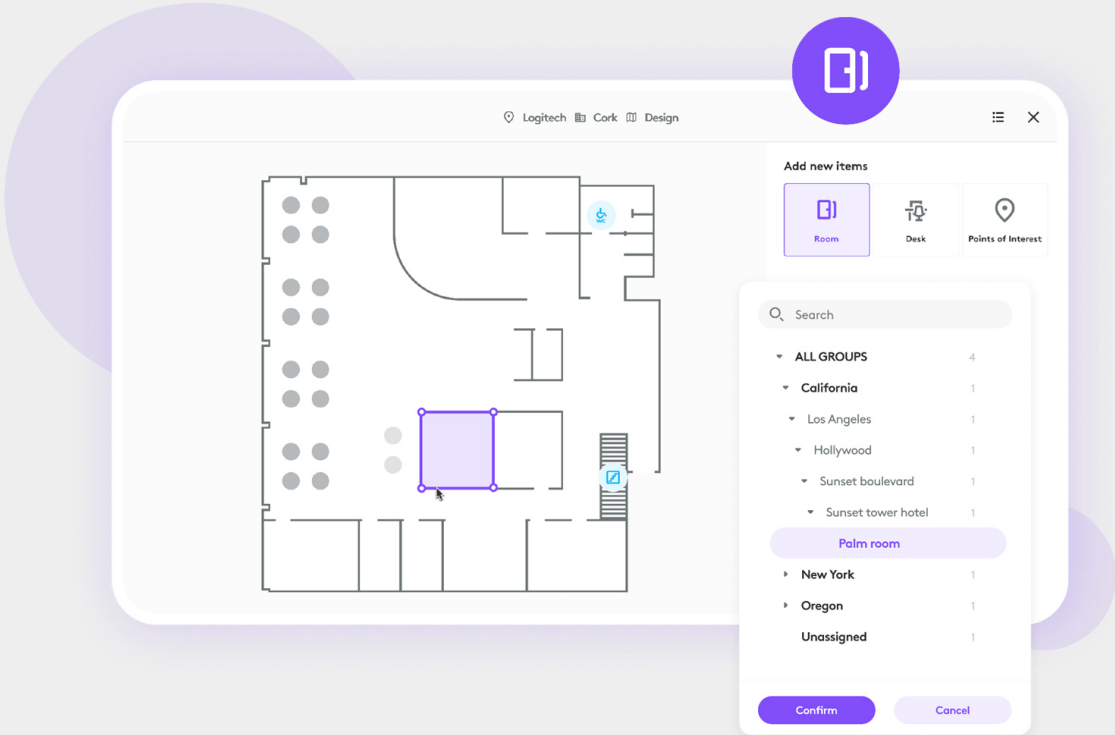
- Cambridge Uni... 16
- London 87
- Malmö 46
- MIT 54

The options here enable you to customize the Flex Desk experience for your end users. These settings will apply to Flex Desks with or without Logi Dock Flex associated with them.

- Reservable
- ↳ Max days in advance
- ↳ Check-in required
- Walk-ins
- ↳ Default session duration
- ↳ Notify user before desk released
- Session time limit
- Auto extend session
- Reserved spot visible to others
- Show QR code

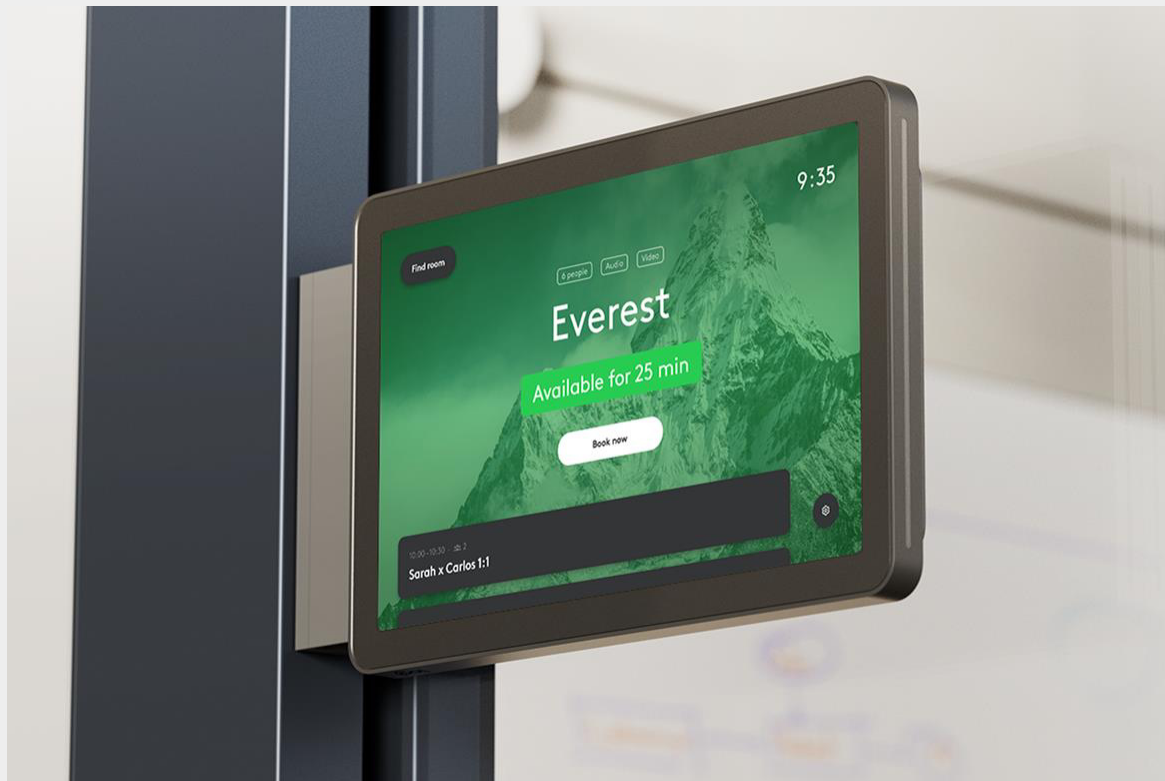
Manage through Sync

- Setup with ease
- Sync Remote UI Access
- Booking policies
- Manage maps**
- Customize Tap Scheduler



Manage through Sync

- Setup with ease
- Sync Remote UI Access
- Booking policies
- Manage maps
- Customize Tap Scheduler**



*Coming soon

Booking

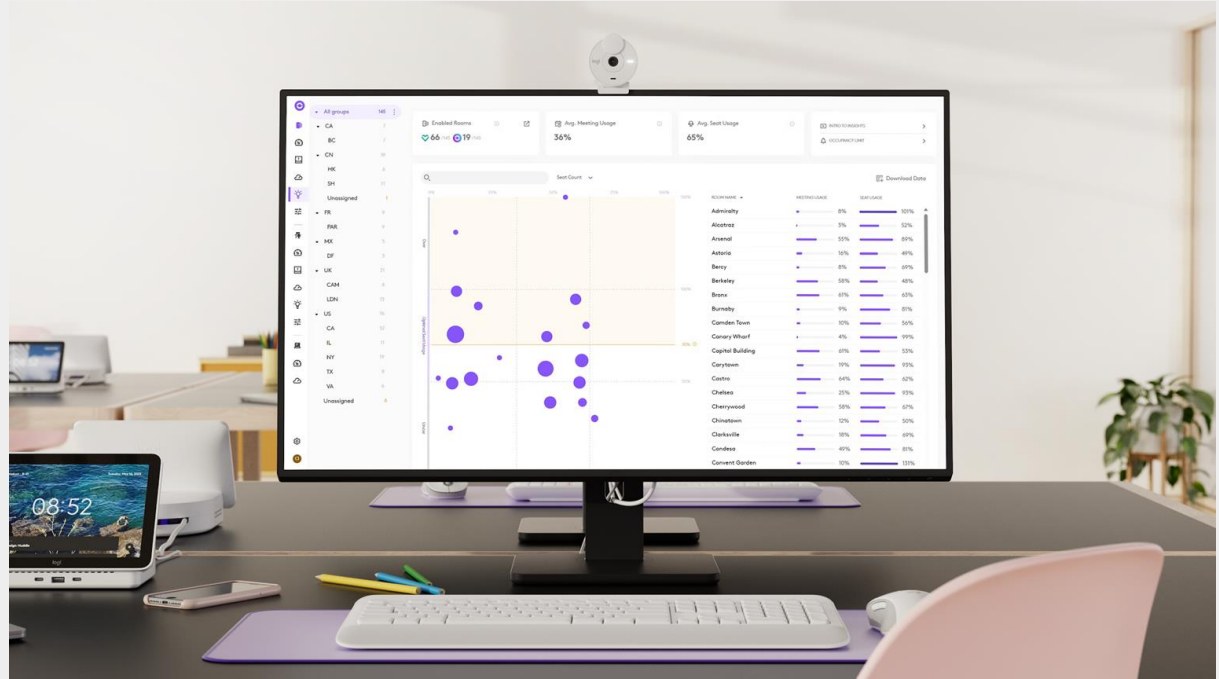
Office maps

Simple management

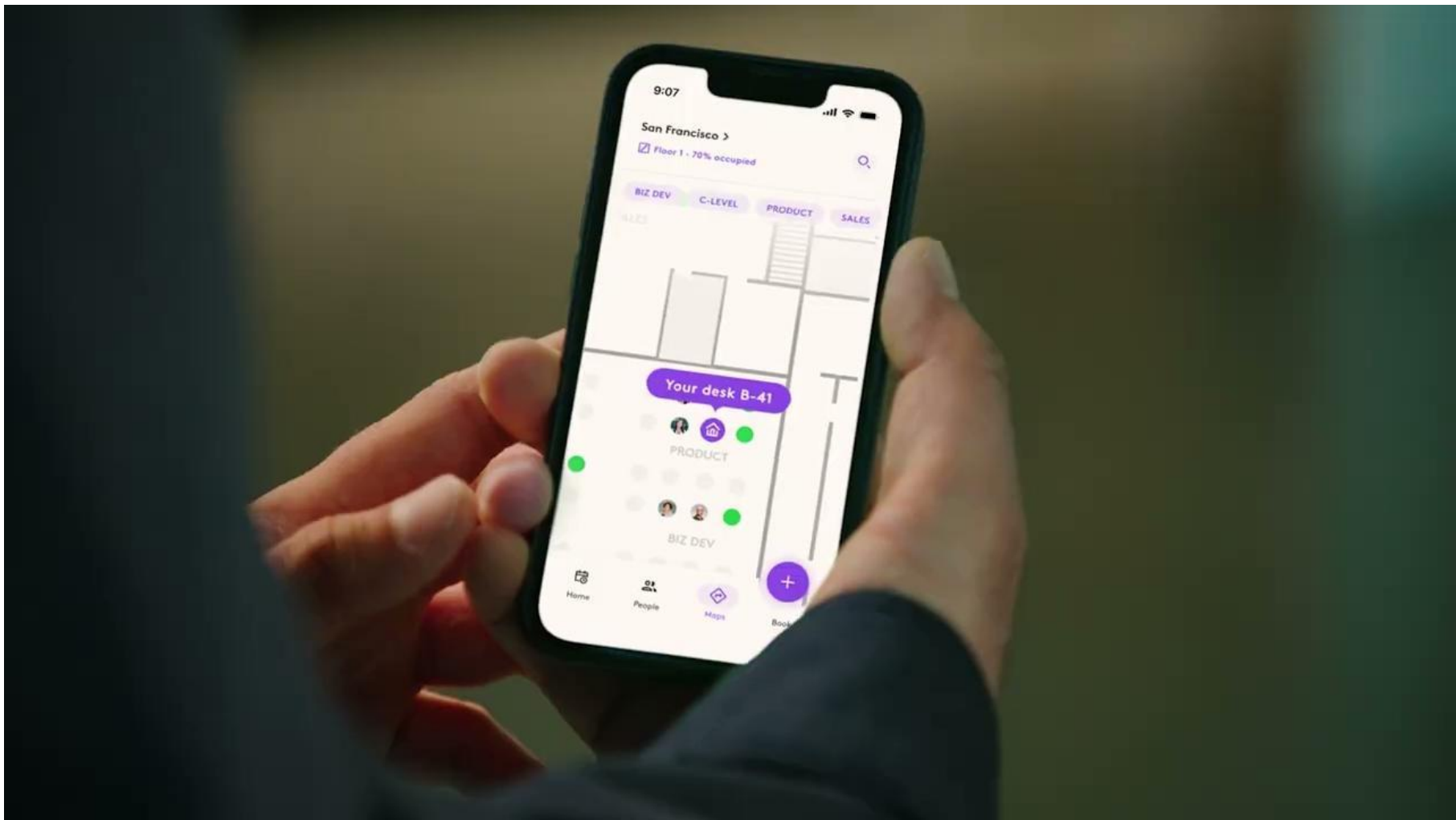
Insights

Understand room usage

Insights in Sync



Intro to desk booking



9:07

San Francisco >

Floor 1 - 70% occupied

BIZ DEV C-LEVEL PRODUCT SALES

Your desk B-41

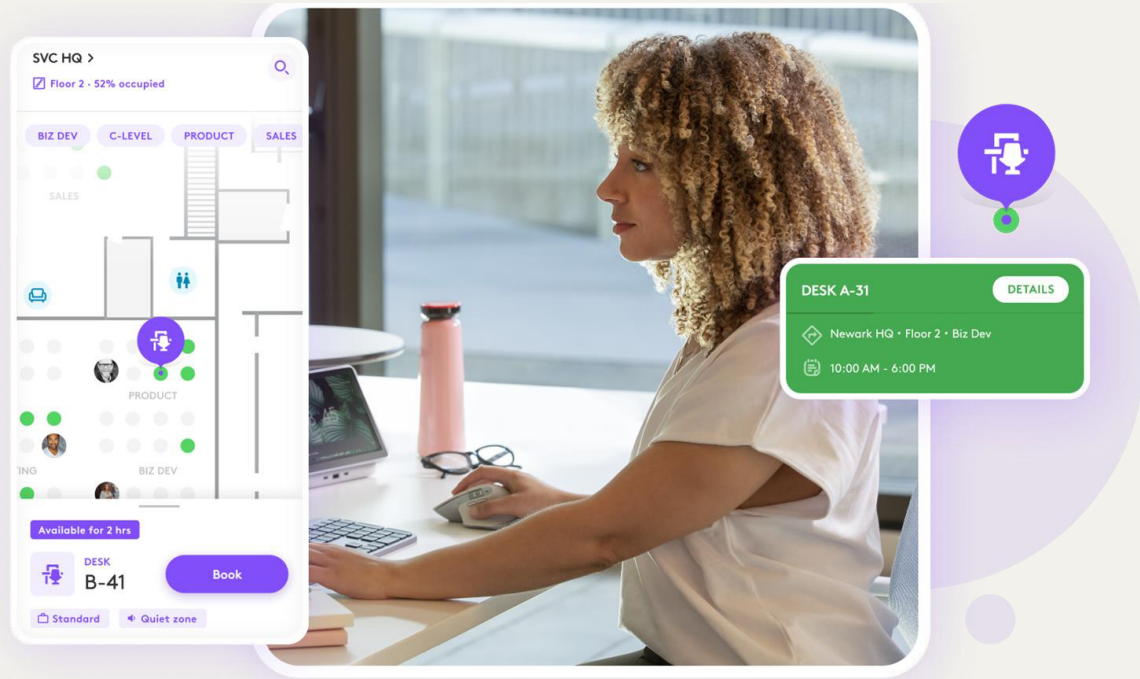
PRODUCT

BIZ DEV

Home People Maps Book

Enable a better desk booking experience

Transform shared desks into personalized workspaces and enable users to get right to work. Bookings are easily made in Logi Tune.



Use with Logi Dock Flex

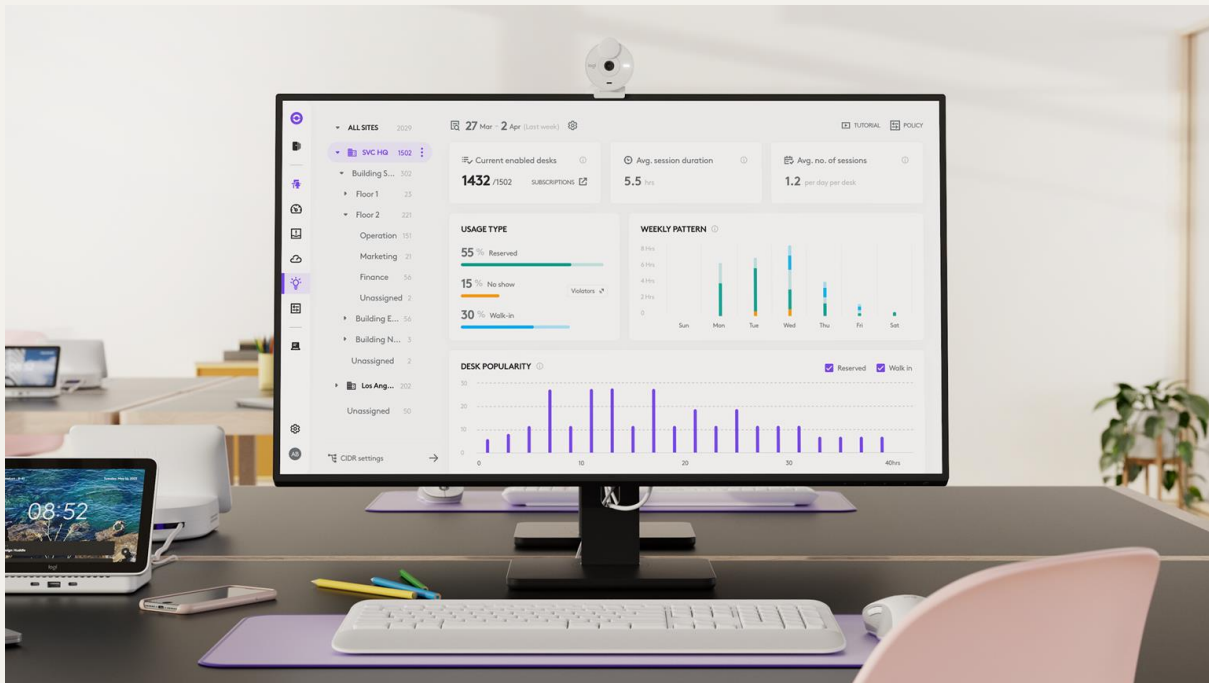
By plugging in their computer in Logi Dock Flex, employees claim their booking and can immediately begin using the connected desk peripherals.



Accurate insights

The automatic check-in ensures accurate analytics on desk and space usage, including office density and utilization rates.

This helps you understand office trends and make informed real estate decisions.



Personalize the experience

Join Calls And See Upcoming Events

Connect calendars to view upcoming meetings, with one touch to join directly from the dock.

Set Away Messages

Employees never have to worry about losing their seat. Logi Dock Flex clearly indicates that the desk is taken, even when the computer is unplugged.

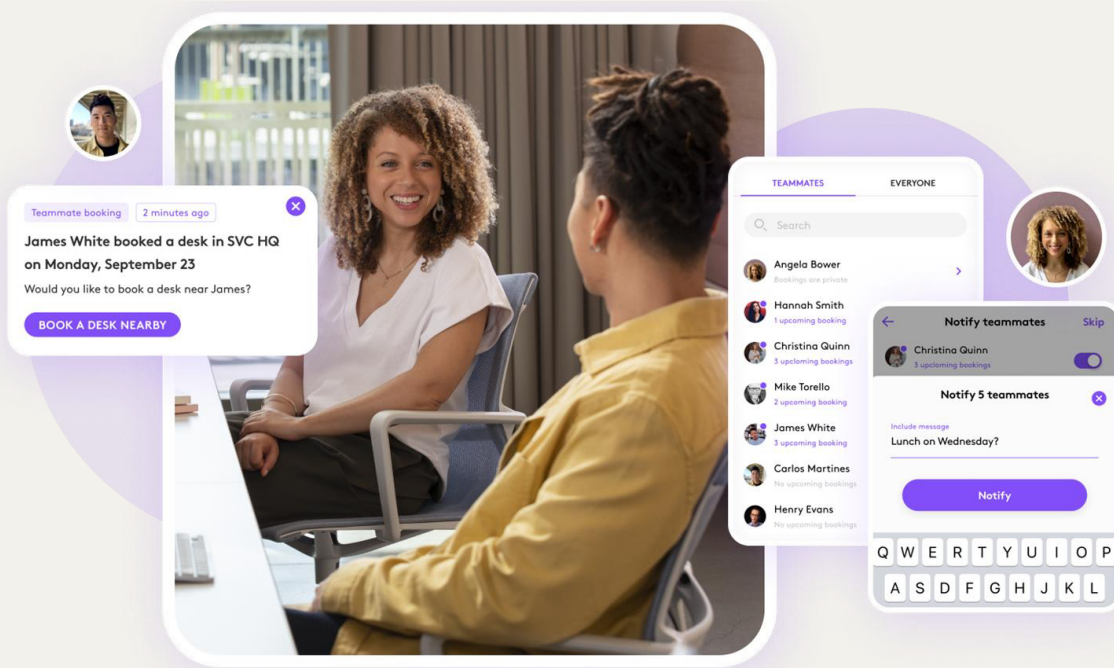
Choose Personalized Backgrounds

For a personal touch, employees can choose their own background photos.



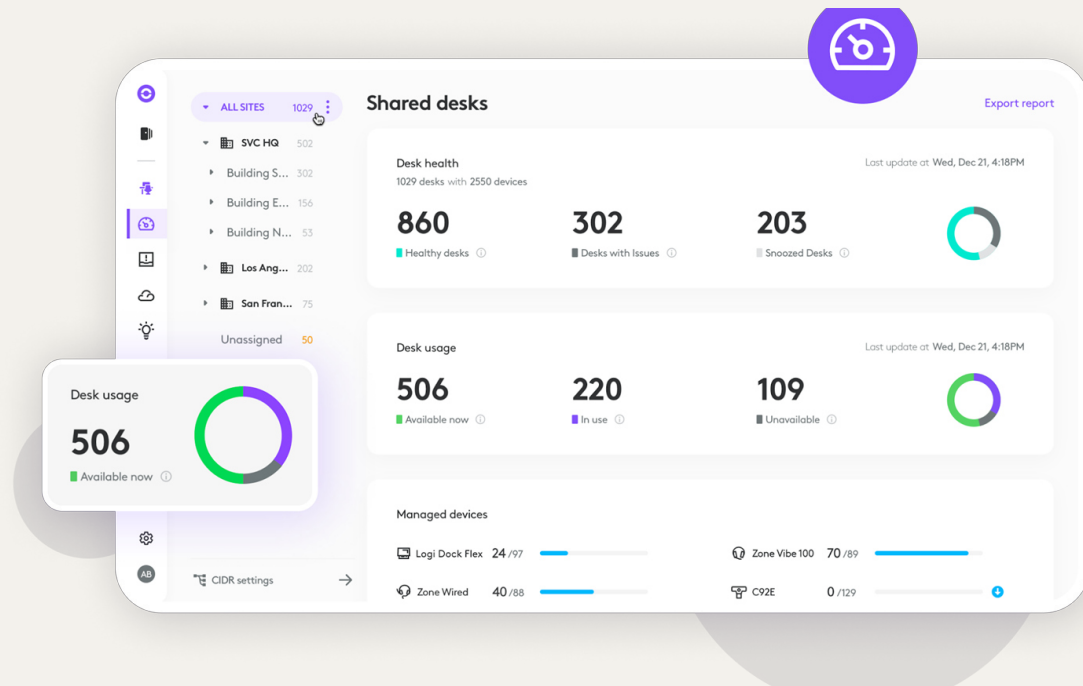
Promote onsite work

See who's already onsite and who's planning to come in. After reserving a desk, notify coworkers and coordinate through in-app messaging.



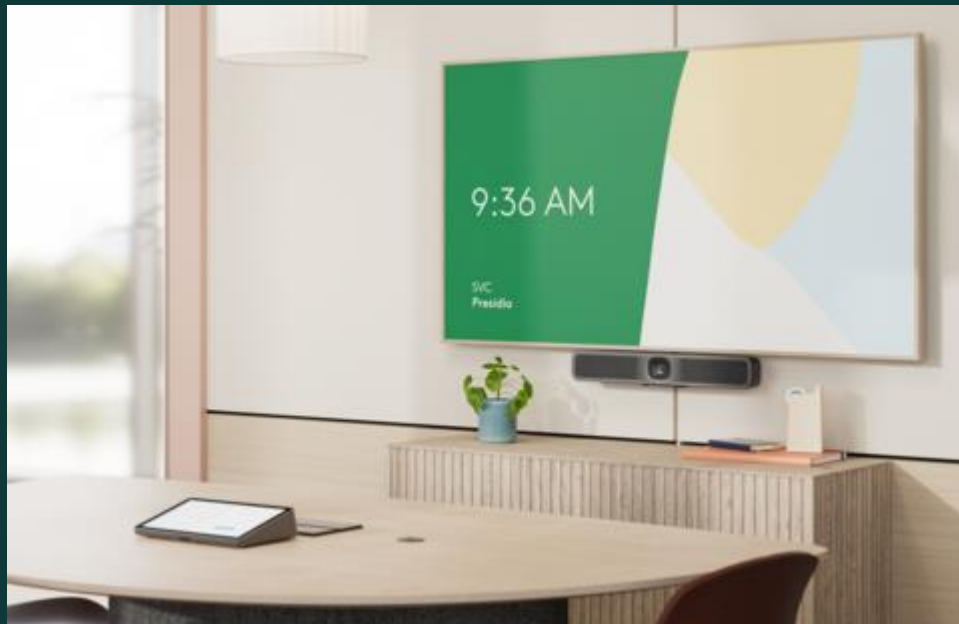
Simplified space management

Monitor and manage Logi Dock Flex remotely using Logitech Sync. Adjust your booking settings, manage equipment, and customize according to your hybrid policies.



SPRING

MeetUp 2



MeetUp



AI



Sustainability



MeetUp 2



Two Types of Deployment

PC-based



BYOD



Works With Popular Platforms

PC-based



PC or Mac-based



Chromebox



AI Video

AI Audio

Better BYOD

Flexible Set Up

Simple to Manage

Sustainability

RightSight 2

Group View

Speaker View

Grid View

Camera Zone

Partner Integrations



AI Video

AI Audio

Better BYOD

Flexible Set Up

Simple to Manage

Sustainability

RightSound 2

Voice Equalization (AGC)

AI Noise Suppression

AI Echo Suppression

Partner Integrations



AI Video

AI Audio

Better BYOD

Flexible Set Up

Simple to Manage

Sustainability

Upgraded BYOD

Single Cable
Digital Signage



AI Video

AI Audio

Better BYOD

Flexible Set Up

Simple to Manage

Sustainability

Thoughtfully Designed

Multi-mount

Table

Display

Wall

Tripod

MeetUp Mounts

Cable Management

Manual Privacy Shutter



AI Video

AI Audio

Better BYOD

Flexible Set up

Simple to Manage

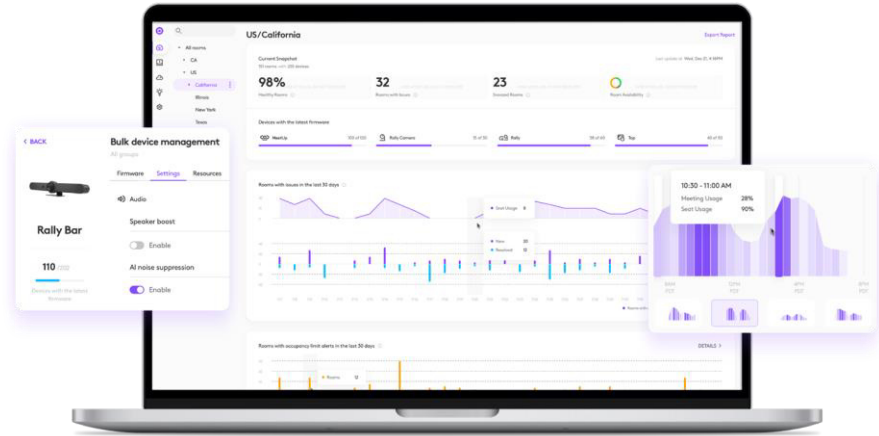
Sustainability

Easy Management

Ethernet & Wifi connection

Sync

Service Providers



AI Video


AI Audio

Better BYOD

Flexible Set Up

Simple to Manage

Sustainability

 Next-life plastics

62%



DEMO

QUESTIONS

Thank you

Thank you
Merci
Gracias
Grazie
Danke
ありがとう
감사합니다
谢谢
धन्यवाद

Contents of the presentation are confidential and proprietary.

Unauthorized use or distribution of the information is strictly prohibited.

All rights reserved.
© Logitech International S.A.

CONTACT

FOR MORE INFORMATIONS AND DETAILS:

HOMERO GESSLER

Enterprise Account Manager, Logitech for Business CH

hgessler@logitech.com

