

The background is a solid teal color. On the left, there is a vertical teal bar. On the right, there are large, white, abstract shapes that resemble parts of the letters 'i', 'b', and 'c'.

logitech

@

Experience Day

Michel Schauenberg

Senior Key Account Manager B2B



Swiss company with global footprint

40+

years in business

250+

design awards

100+

countries

14

customer
support sites

3 in 4

products use
Next-Life Plastics

Market impact

71%

of the Global 500
Index use Logitech

1 in 3

meeting room and desk
solutions use Logitech

1

in video conferencing
and personal workspace

Partnerships and alliances

Google

SHURE

BARCO

 Microsoft

ASUS
NUC

 LG

zoom

Steelcase

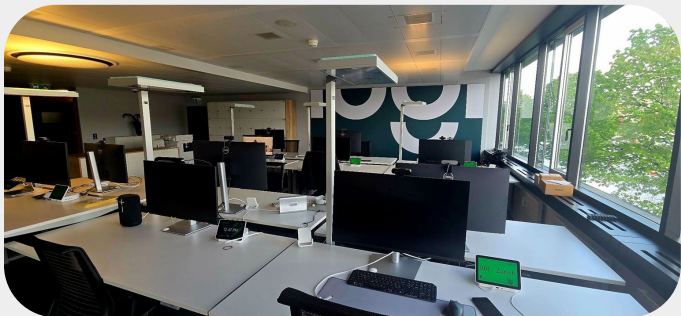
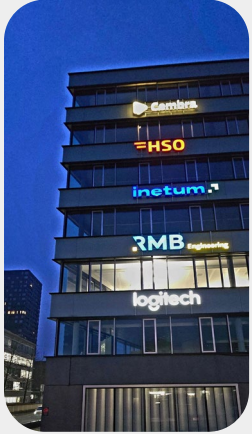

Partner

Logitech HQ @ [EPFL Lausanne](#)

- Daniel Borel Innovation Center (BIC) situated @ EPFL Campus
- About 400 employees working hybridly: designers, engineers, sales & marketing
- Part of our global engineering footprint with world class labs
- Expertise in machine learning, sensing systems, embedded systems and more
- One of few key sites for our design capability : UX, ID, CI, CMF, design for sustainability
- 25 new interns from EPFL per semester
- Home of the Logi Ergo Lab



Logitech Switzerland Office Altstadt/Zurich



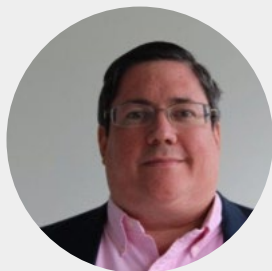
Logitech Switzerland B2B Team



Gregory Milius
High Touch Account
Manager
gmilius@logitech.com



Roman Gischig
Lead Solution Engineer
rgischig@logitech.com



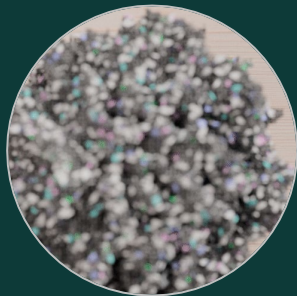
JC Rosset
Business Development
Manager Services
jrosset@logitech.com



Daniel Döbeli
Inside Business Development
Representative
ddobeli1@logitech.com

The Logitech Difference

Designed for
sustainability



Every
environment



Designed for
security



Powered by
software

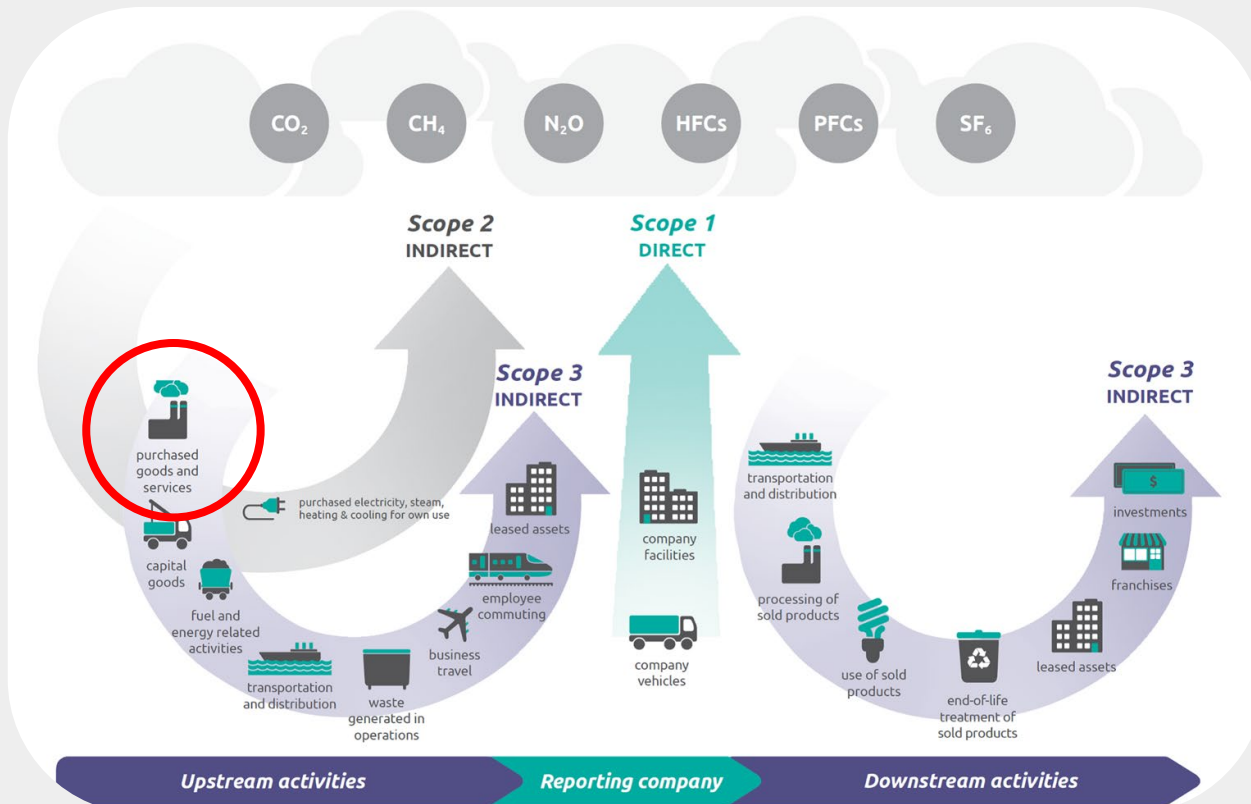


Simple,
human-first
experiences

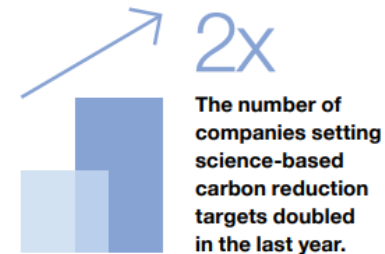


Design for sustainability

Design for Sustainability



A Sharp Rise in Sustainability Goals



Companies setting science-based carbon reduction targets now represent nearly 40% of the global economy (SBTi)

Of all validated science-based carbon reduction targets, Europe has the most with Asia second and North America third (the remaining 6% is distributed among other parts of the world, Source: SBTi).



New rules and regulations such as the EU's 2024 anti-greenwashing law are just one reason more companies there are focused on sustainability issues.

Design for Sustainability

Design with less.

Design smarter.

Design for progress.

logitech®



Clean
Manufacturing



Recycled
Fabrics



Recycled
Plastics



Recycled
Aluminum
&
Low Carbon
Aluminum



Responsible
Packaging



PVC- free
Cables



Reducing
Waste



Energy
Efficiency

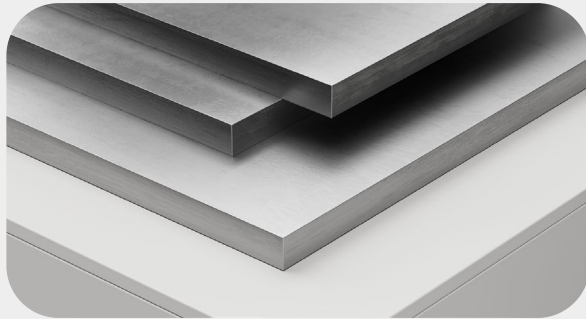
Design for Sustainability



Next-life plastics



Design for Sustainability



Low carbon aluminum is made using renewable energy, like hydropower, rather than fossil fuels.

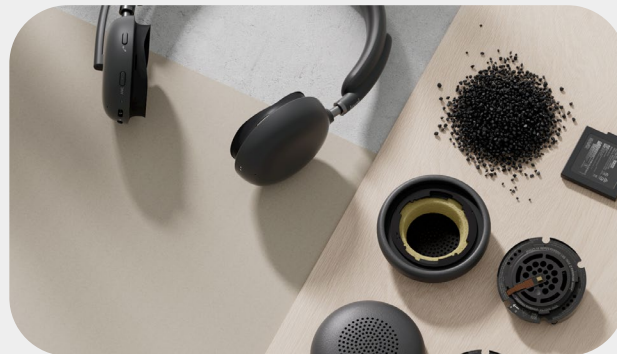
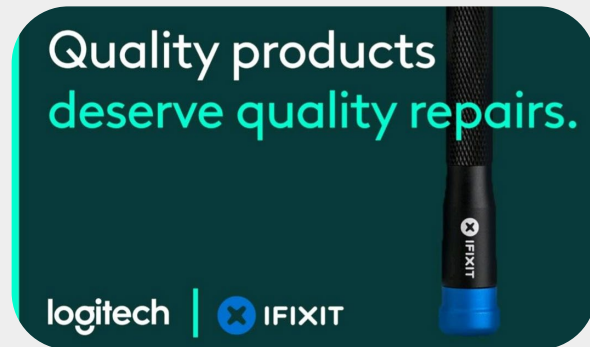
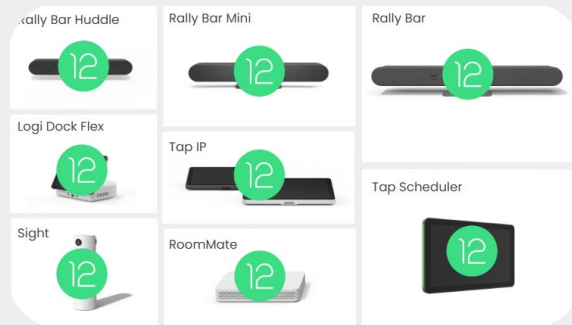


Fabric made with recycled plastic materials instead of virgin polyester, gives used materials like plastic water bottles a second life.



We continue to expand our commitment to responsible sourcing of paper through our FSC- certified packaging program and a policy aimed at eliminating single-use plastic packaging from our products.

Design for Sustainability



We are updating our CollabOS devices from Android 10 to Android 12.

Extend the life of hardware through replaceable parts gives added longevity to personal peripherals.

Order consumable parts directly from Logitech and replace them yourself for easy refurbishing

Partnership with iFixit in more than 60 countries

Design for Sustainability



We build trust, accountability, and credibility by being candid about our impact, progress and goals. That's why, since 2007, we publish yearly our "Impact Report"



Product Carbon Footprint (PCF) study helps customers make informed purchasing decisions by considering the carbon impact of their purchases.



EcoVadis is one of the most widely used business sustainability rating systems.

But only the top 1% of rated companies are awarded the prestigious EcoVadis Platinum Medal.

Design for security

Design for Security



All our development follows industry best practice from initial design to product launch.

No patents are being violated.

Responsible supplier network in compliance with UN standards

Compliance with industry standards for privacy and data protection.

 **logi bolt**



Logi Bolt is a cutting-edge wireless protocol, engineered to meet rising enterprise security expectations.

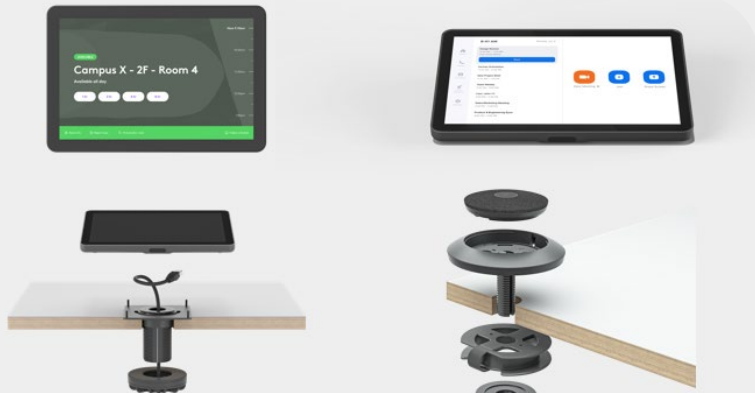
It combines Bluetooth® Low Energy wireless technology Security Mode 1, Security Level 4



Integrated with popular video conferencing and scheduling services, CollabOS is the unifying operating system running on Logitech video collaboration devices.



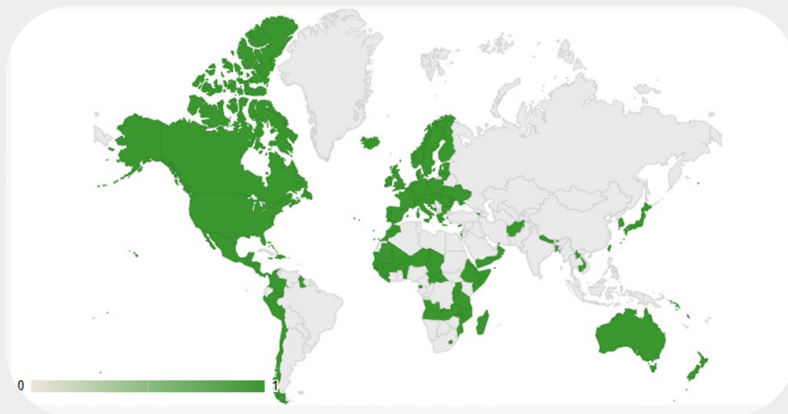
Design for Security



Specifically designed devices for use in Logitech video conferencing solutions.

Secure installation of the devices to ensure flawless functioning of the video conferencing room.

Secure installation of the devices to always know via remote management what is running and installed in a room.



TAA-compliant Rally Bar with removed wireless radio chips (not just disabled in the software).

Rally Bar No Radio works in both USB and Appliance mode.

Manufactured in a TAA-compliant country.

Design for Security

SECURITY

=

TRUST

=

TRANSPARENCY

BOLT Whitepaper



LOGI Sync security & privacy whitepaper



LOGI video conference whitepaper



Logitech Security Rating

A

821

/ 950

Logitech's security rating is based on the analysis of their external attack surface. The higher the rating, the better their security posture. [Start a free trial](#) to get a more in-depth risk assessment for Logitech.

Company info

Logitech →

Company	Logitech
Employees	6,100
Location	Lausanne, Switzerland
CEO	Bracken P. Darrell
Last updated	November 08, 2024
Industries	Manufacturing

How
Logitech's
responsible AI
strategy could
redefine the
future of tech
at work

An interview
with Dr. Gleb
Tsipurksy

Logitech is making sense of the Gen AI space with a strong focus on governance, transparency, and long-standing values that define the company's ethos.

Roman Gischig

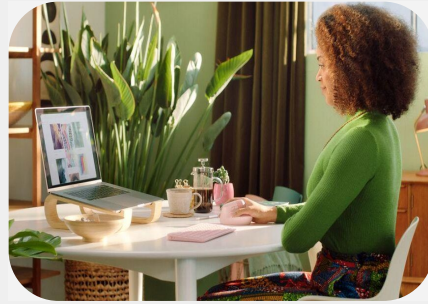
Lead Solution Engineer B2B



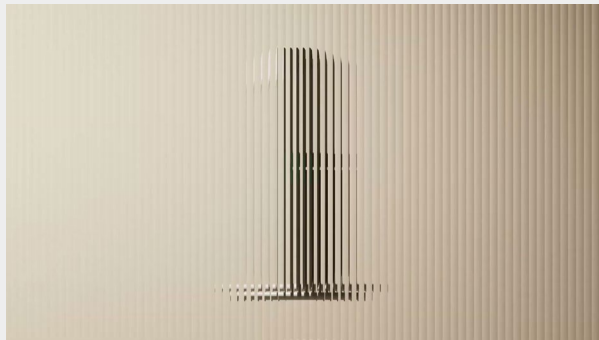
New Products

At home.
In the office, and
in between.

All spaces are
collaboration
spaces.



New Products



The latest member of our Rally Family, Rally Board 65.

Rally Board 65 simplifies video conferencing with an extremely easy-to-deploy, all-in-one collaboration device that combines powerful audio and video with a 65-inch touchscreen display.



Logitech Spot, A modern-day sensing device that can be easily deployed throughout the office to enable smarter workspace automations, and to gather insights on room utilization, health and energy.



The Logitech Rally Camera Streamline Kit is a comprehensive USB PTZ video solution for hyflex learning.

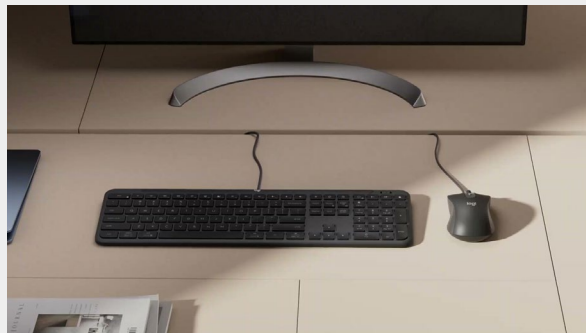
Educators can direct the teaching flow by switching views from the camera with wireless preset buttons.

New Products



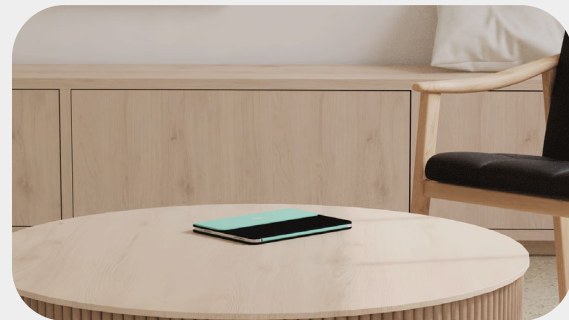
Logitech is the first headset company that supports native Bluetooth.

From entry-level to advanced, find one that meets your company's needs.



The new Cable Keyboard (K620) and Mouse (M520) offer USB-C connection and compatibility with Windows, macOS and Chrome.

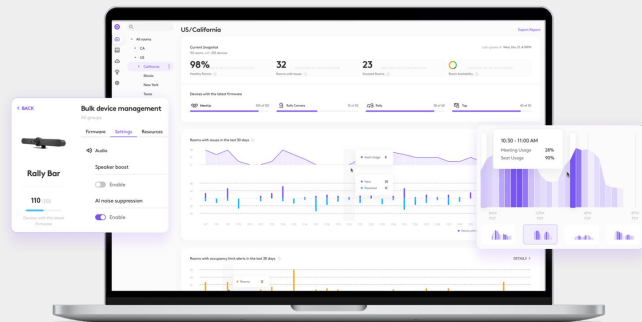
Also available as Combo MK620



Flip Folio 11" and Flip Folio 13", the perfect companion for your iPad

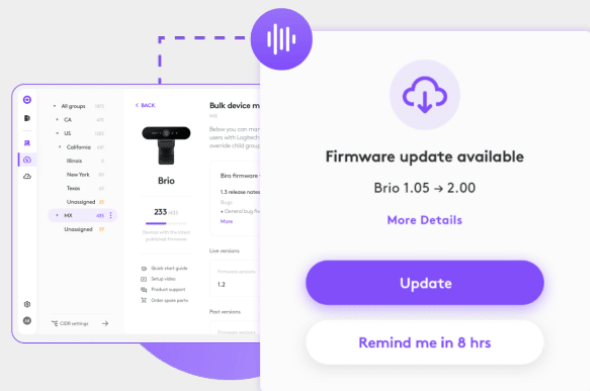
Software & Services

Software



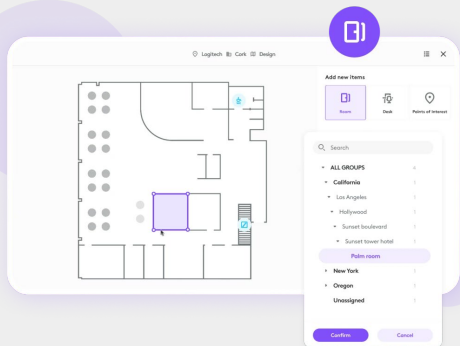
With Logi Sync you get remote device management across all spaces.

Managing Conference Rooms, Devices for Individual Workstations, and Flexible Desks, All on a Single Platform



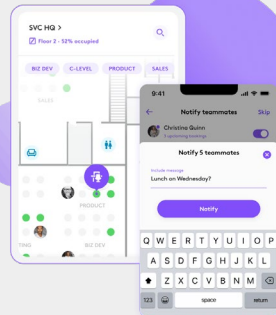
With Logi Tune you take charge of your workplace experience wherever you are —at home, in the office or on the go. Webcam, mouse, keyboard and headset settings are all at your fingertips.

Software - Essential License



With Logitech Essential for Rooms you get a streamlined meeting room booking and management solution.

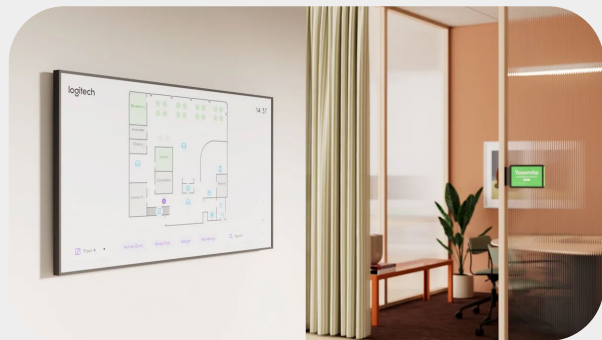
Help employees book rooms with Logitech's easy-to-use room booking solution, designed for Tap Scheduler.



With Logitech Essential for Desk you help your employees to find the perfect desk within seconds.

Filter by equipment, location, and type of working space to find the ideal seat.

See who's already onsite and who's planning to come in. After reserving a desk, notify coworkers and coordinate through in-app messaging.

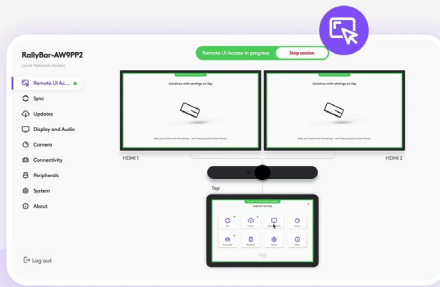


Essential License also gives you Logi View. Logitech View simplifies workplace navigation with interactive maps on large touch screens*

Employees can quickly search for and find available spaces, book spaces directly from the map, and locate coworkers.

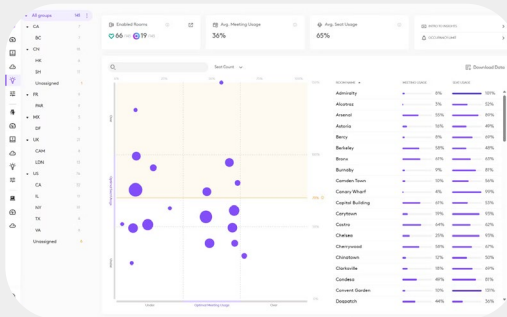
* requires Room Mate

Software - Essential License



Remotely access and manage network-connected devices.

View up to two displays and a Tap controller or scheduling panel from the comfort of your office.

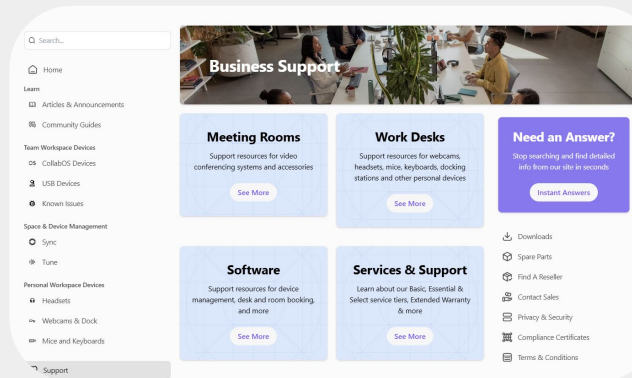


Get insights on space and device usage to help better plan and decide on future IT investments and workspace-related changes.



Get Email alerting and ServiceNow integration

Services



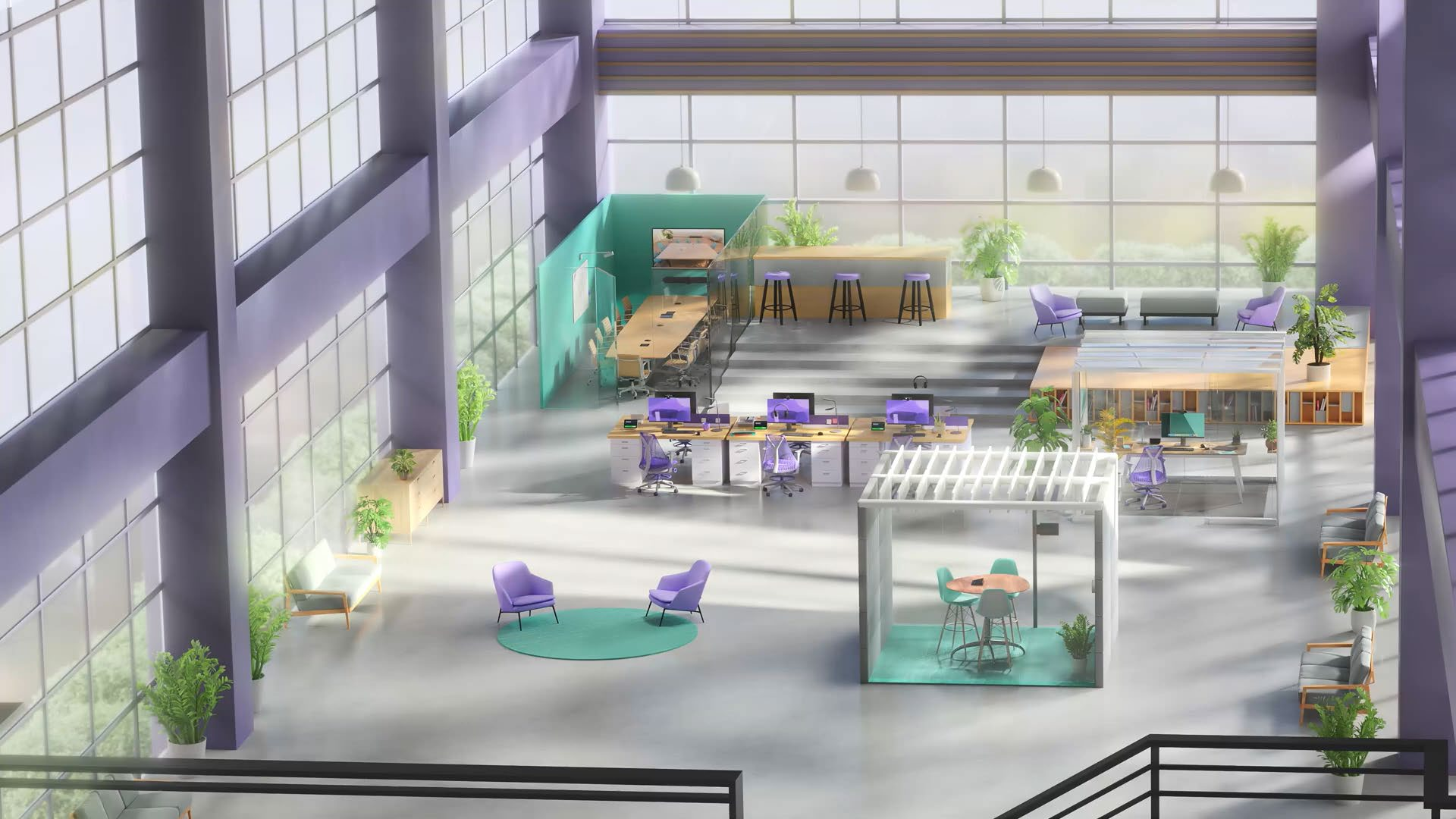
Logitech Select is a comprehensive service plan featuring 24/7 issue resolution by product experts, a dvanced RMA, and Sync Insights for maximum uptime.

Logitech Select for Rooms/Small Rooms and Flex Desks:

- Everything from Logitech Essential
- Product replacement
- Dedicated Success Manager
- Onsite Spare Parts
- 24/7 Enterprise-Grade Support

On the Logitech Product Hub you find:

- all the informations about the Logitech B2B Products
- the newest downloads
- Release notes
- Instant answers with a AI Chat tool
- Open support/ service tickets



Thank you

Thank you
Merci
Gracias
Grazie
Danke
ありがとう
감사합니다
谢谢
UO _4π

Contents of the presentation are confidential and proprietary.

Unauthorized use or distribution of the information is strictly prohibited.

All rights reserved.
© Logitech International S.A.